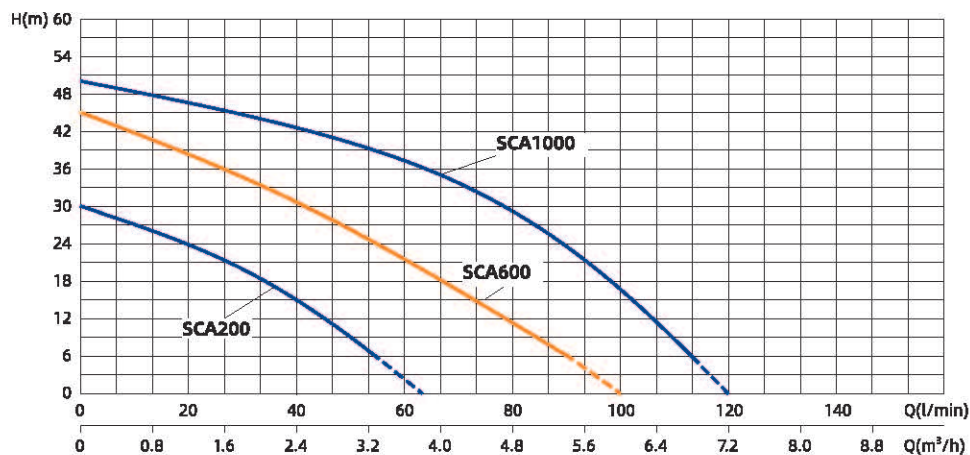


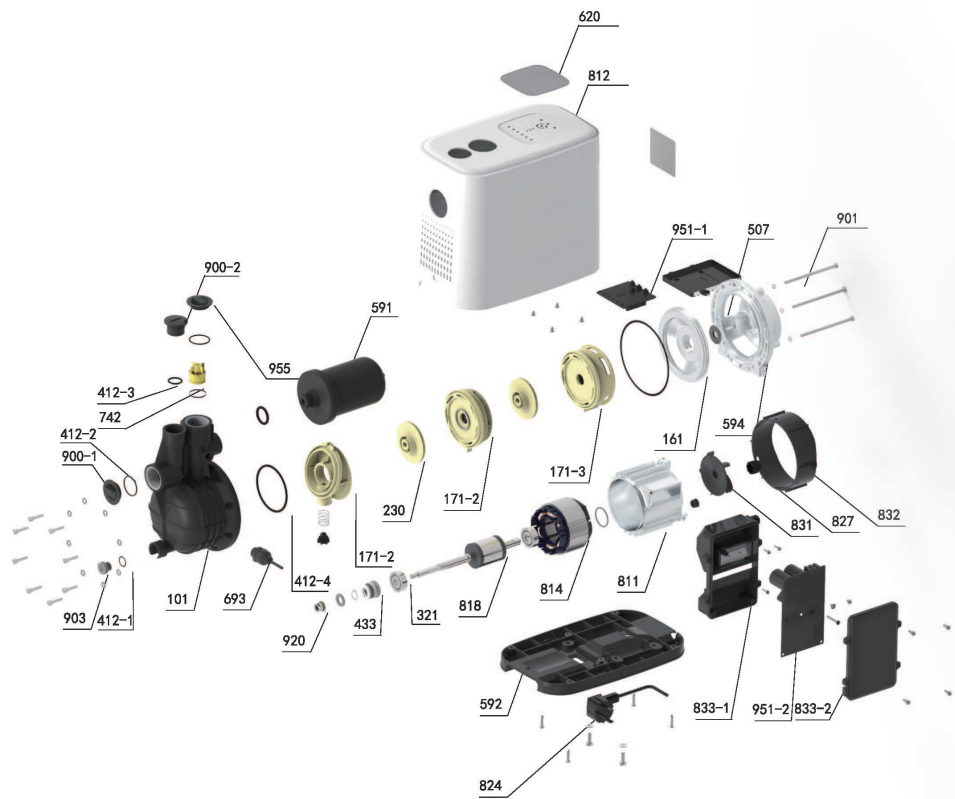
Performance Curve



Model	Power		Max. Flow (m³/h)	Max. Head (m)	Head Range (m)	Max. Suction (m)
	kW	HP				
SCA200	0.2	0.27	3.8	30	25~4	5
SCA600	0.6	0.8	6	45	40~2	6
SCA1000	1	1.36	7.2	50	45~10	6

Model	SCA200	SCA600	SCA1000
Capacitor	/	/	/
End cap Bearing	6201-2RZ	6202-2RZ	6202-2RZ
Connection Part Bearing	6201-2RZ	6202-2RZ	6202-2RZ
Motor Shaft	20Cr13	20Cr13	20Cr13
Mechanical Seal	108-12/21&S:A(RC)&Static ring26	118-14/21 static ring 28&S: K (PC)	108-14/20.5&Without mechanical sealing ring&S:K(RC)
Motor Case	Aluminum shell	Aluminum	304#
Coupling	aluminum	Cast Iron	plastic
Pump Body	plastic	Plastic patrs	plastic
Impeller	plastic	Plastic patrs	plastic

Components & Materials



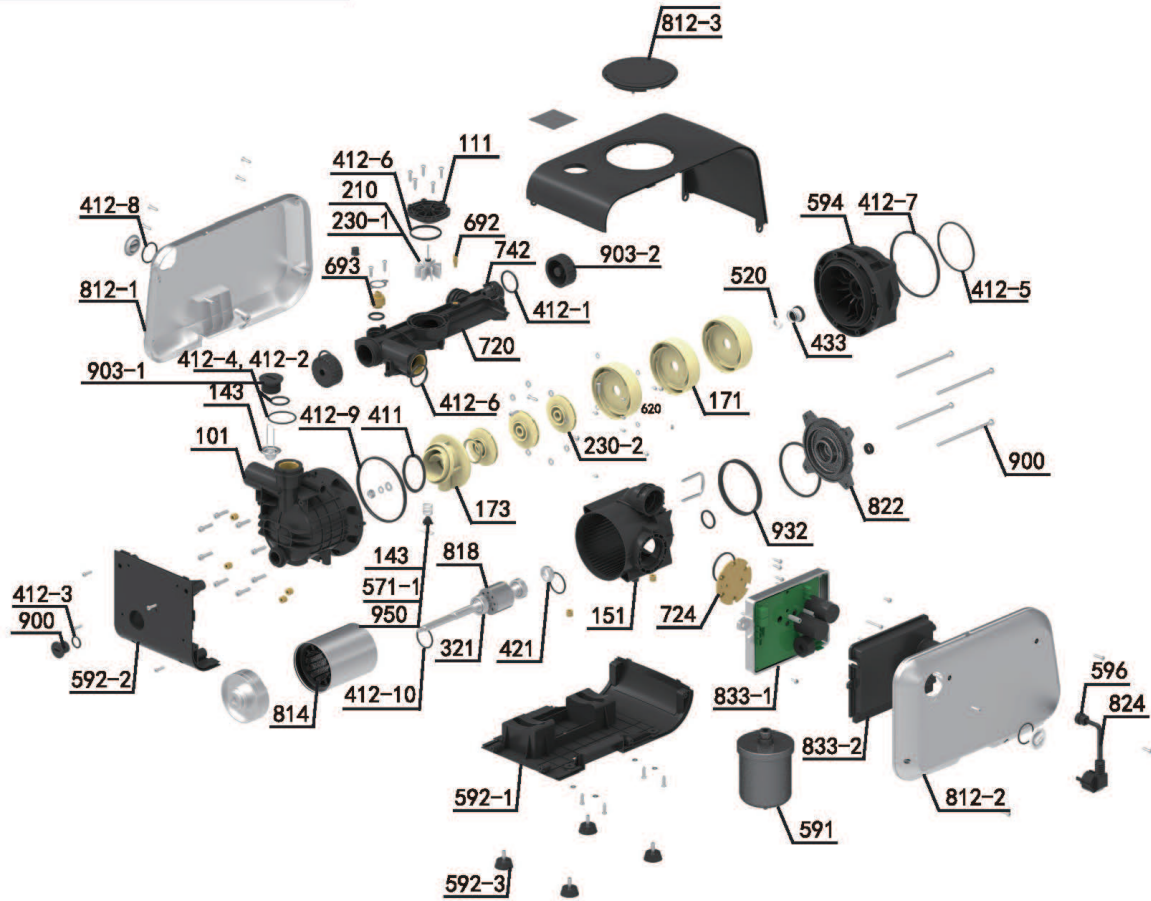
No.	Part name	No.	Part name	No.	Part name
161	Pump Cover	507	Water Deflector	832	Fan Cover
101	Pump Body	591	Pressure Tank	833-1	Terminal Box
171-2	Guide Vane	594	Connector	833-2	Terminal Box Cover
171-1	Guide Vane Cover	620	Panel Screen	900-1	Water Inlet Valve
171-3	Final Stage Guide Vane	693	Pressure Sensor	900-2	Air Release Valve
230	Impeller	742	Check Valve	901	Hexagonal Bolt
321	Deep Groove Ball Bearing	811	Motor Casing	903	Return Hole Plug
412-1	O-ring Seal Ring	812	Cover Casing	951-1	Display Panel
412-2	O-ring Seal Ring	818	Rotor	951-2	Control Panel
412-3	O-ring Seal Ring	824	Cable	955	Dust Cover
412-4	O-ring Seal Ring	827	Cable Sheath	554	Pressure Cap
433	Mechanical Seal	831	Fan		

Components & Materials



No.	Part name	No.	Part name	No.	Part name
101	Pump body	742	Check valve	595-1	Rubber pads for footing
161	Pump cover	813	Stator	595-2	Rubber pads for footing
230	Impeller	821	Rotor	621-1	Wire holder
321	Deep groove ball bearings	824	Cable	621-2	Driver board
433	Mechanical Seal	831	Fan	621-3	Control panel
505	Circlip for shaft	834	Signal cable (routing cable)	833-1	Junction box (panel box)
507	Water retaining ring	903	Backflow hole plug	833-2	Control box
526	Fan cover	950	Spring	833-3	Control box cover
531	Housing	951	Wavy spring	900-1	Junction box nut
546	Heat block	171-1	(Final class) guide vane	900-2	Water filling cock
562	Base	171-2	Guide vane	900-3	Hexagon head bolts fully threaded
591	Pressure tank	171-3	(Front) guide vane cover	900-4	Hexagon socket head screws
594	Coupling	410-1	Rubber gaskets	900-5	Vent cock
620	Touchscreen	410-2	Rubber pads	900-6	Hexagon-head bolt
693	Pressure sensor	412-1	O-ring seal	930-1	Spring gasket
697	Tube	412-2	O-ring seal	930-2	Spring gasket
698	Hall sensor	412-3	O-ring seal		

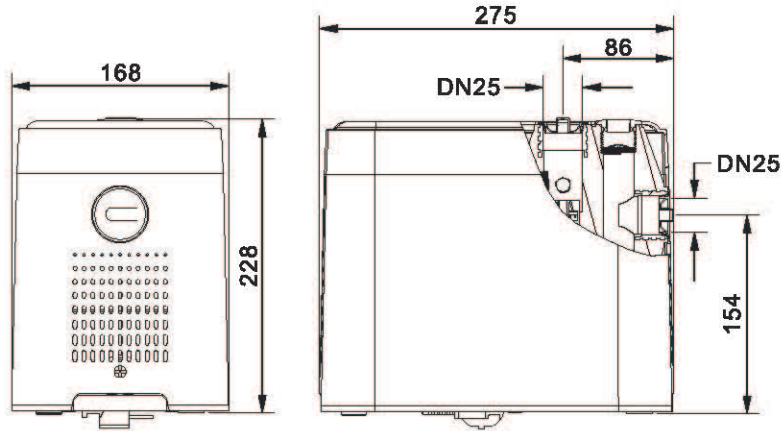
Components & Materials



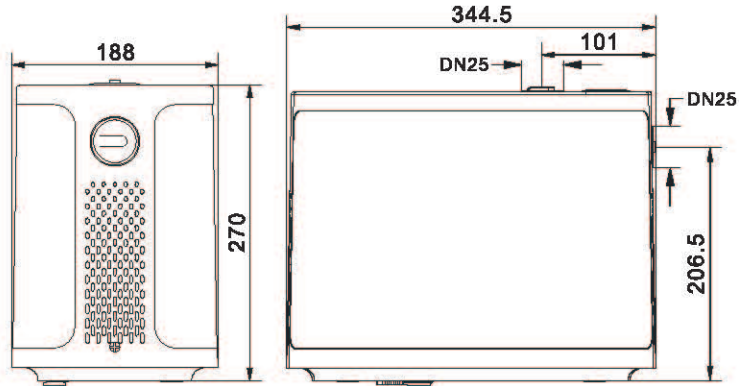
No.	Part name	No.	Part name	No.	Part name	No.	Part name	No.	Part name
812-1	Left housing	955-1	Panel sticker	143	Filter	151	Water-flowing pump body	724	Radiating plate
550-8	Pressure sensor pressing plate	620	Display panel assembly	101	Pump body	591-1	Large insert spring	833-1	Control box assembly
111	Flowmeter cover plate assembly	812-3	Panel cover	900-2	Drain cock	822	Rear end cover	833-2	Control box cover
210	Turbine shaft	594	Connector	592-2	Side base	827-2	Lead wire sheath	812-2	Right housing
230-1	Turbine assembly	171	Guide vane	411	Rubber washer	932	Backing ring	827	Cable
692	Temperature sensor	230-2	Impeller	903-3	Return hole plug	818	Rotor	591	Pressure tank
693	Pressure sensor	720	Outlet pipe fitting	950-1	Spring	814	Stator	592-3	Foot
903-2	Plug	903-1	Vent cock	591-2	Small insert spring	592-1	Base		

Packing Size & Weight

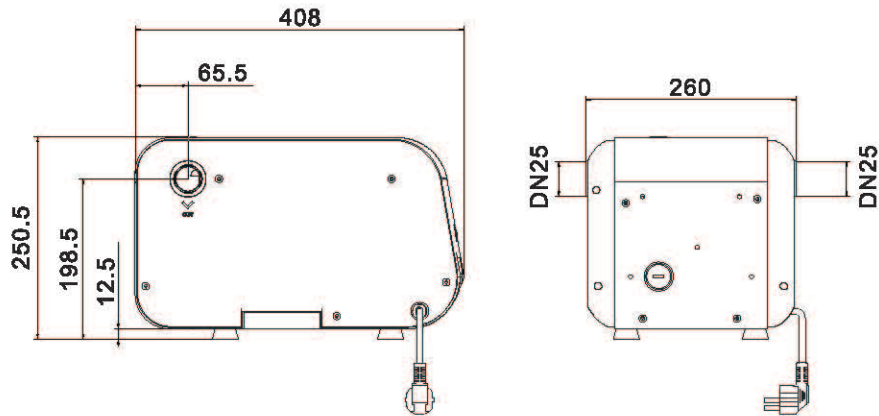
SCA200



SCA600



SCA1000



Model	Dim.(LxWxH) mm	N.W. (kg)	G.W. (kg)	20'Loading Qty. (pcs)
SCA200	275x168x228	4.8	5.4	1512
SCA600	344.5x188x266.5	7.3	7.4	882
SCA1000	408x260x205	10.5	11.5	595