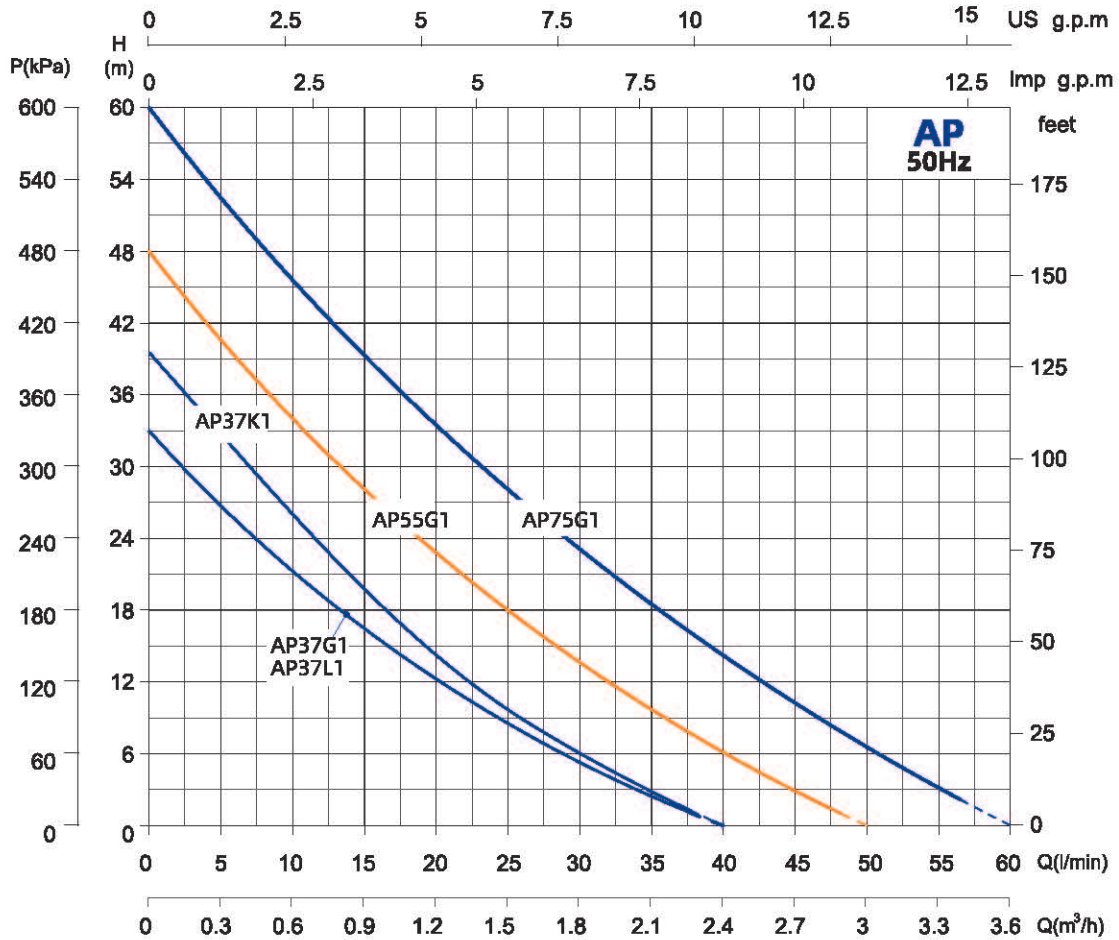


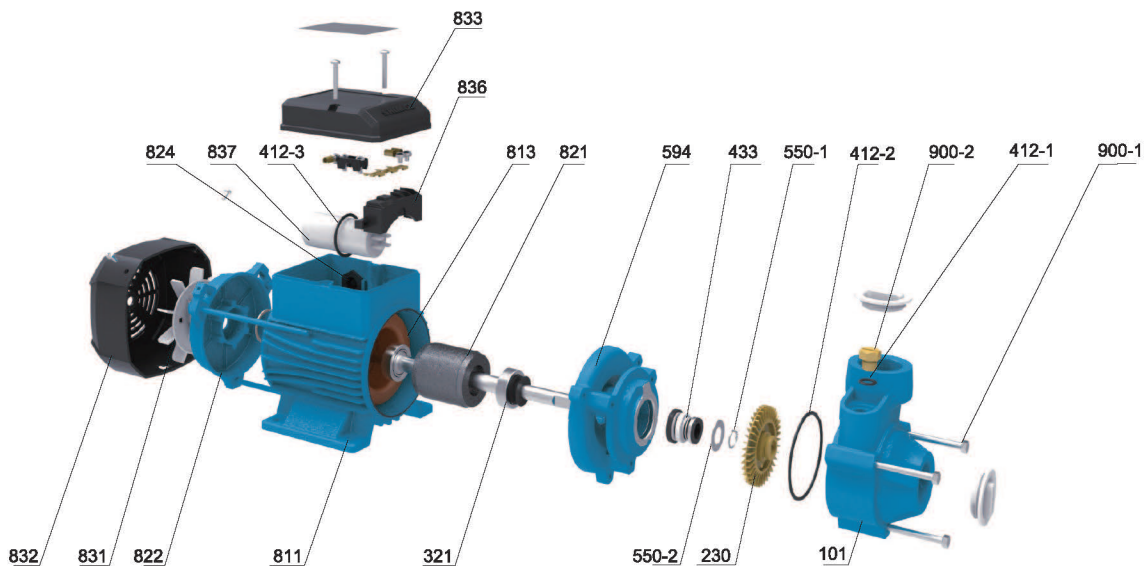
Performance Curve



Model	Power		Max. Flow (m³/h)	Max. Head (m)	Head Range (m)	Max. Suction (m)
	kW	HP				
AP37G1	0.37	0.5	2.4	33	27~1	8
AP55G1	0.55	0.75	3	48	44~1.5	8
AP75G1	0.75	1	3.6	60	53~2.5	8
AP37L1	0.37	0.5	2.4	33	27~1	8
AP37K1	0.37	0.5	2.4	40	30~1.5	8

NOTE: 0.3m short-term without plug

Components & Materials

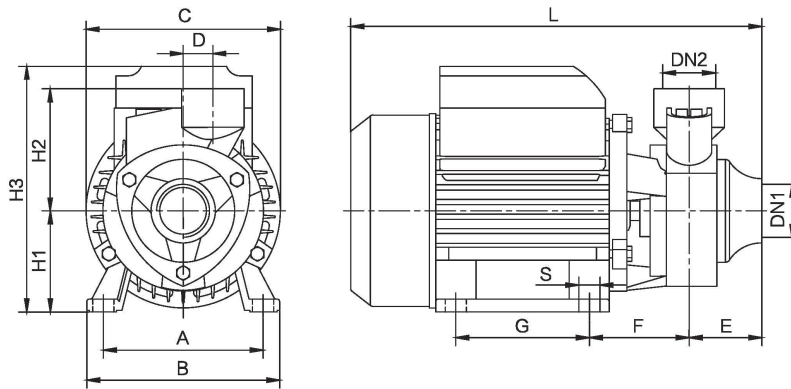


No.	Part name	No.	Part name	No.	Part name
900-1	Hexagon head bolts full thread	550-2	Flat Washers	831	fan
412-1	O-ring	594	Coupling	832	Fan cover
900-2	Vent cock	821	Rotor	837	Running capacitor
101	Pump body	813	Stator core with windings	412-3	O-ring
412-2	O-ring	321	Deep groove ball bearing	836	Terminal block
550-1	Circlip for shaft	811	chassis	833	Junction Box
230	impeller	822	Back cover	824	Cable
433	Machinery Seal				

Model	AP37G1	AP37L1	AP37K1	AP55G1	AP75G1
Capacitor(μF)	10μF\450V	10 μF/450V	10 μF/450V	12μF\450V	15μF\450V
Bearing	6201-2RZ		6202-2RZ		
Motor Shaft	45#Steel+304				
Machinery Seal	108-12/21B:A(P)	103-12/20.5 B:A(P)		108-12/21B:A(P)	
	A:Graphite B: Ceramic P:NBR				
Motor Case	Aluminum				
Coupling	Cast iron				
Pump Body	Castiron				
Impeller	Brass				

Dimensions & Weight

Model	DN1	DN2	Dim.(mm)											N.W. (kg)	
	Inch		A	B	C	D	E	F	G	L	S	H1	H2		H3
AP37G1	1	1	100	123	121	16	42	64	80	255	7	63	75	158	4.8
AP37L1	1	1	93	115	115	15	33.5	64	58	223	7	60	68	148	4.0
AP37K1	1	1	93	115	115	15	33.5	64.5	58	223.5	7	60	68	148	4.4
AP55G1	1	1	112	136	139	18	49.5	58.5	88	279	7	72	85	181	8
AP75G1	1	1	112	136	139	20	48	60	88	282	7	72	85	181	9.5



Packing Size & Weight

Model	Dim.(L×W×H) mm	G.W. (kg)	Dim. For Outer Packing(L×W×H)mm	G.W. (kg)	Packing Qty. (pcs)	20'Loading Qty. (pcs)
AP37G1	280×140×170	4.8	440×290×360	29.3	6	3060
AP37L1	235×135×175	4.3	425×245×375	26.6	6	4320
AP37K1	235×135×175	4.7	425×245×375	29	6	4320
AP55G1	315×190×202	8.3	315×190×202	17.5	1	2100
AP75G1	315×190×202	9.9	315×190×202	20.5	1	2000

