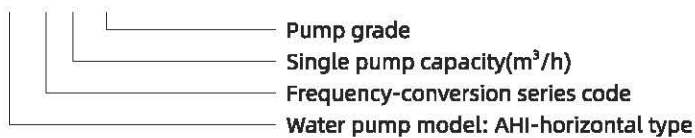


Model Instruction

AHI E 3 - 4



Overview Of The Product

AHIE series fully integrated intelligent variable frequency pump integrates the water pump, frequency converter controller, and pressure tank, enhancing water supply equipment. It adopts the innovative PIS style with a brand-new appearance that is dynamic, smooth, cohesive, and distinctive. This pump is equipped with artificial intelligence and automatic adjustment capabilities, meeting the demand for constant pressure variable frequency water supply. It ensures that the pressure in the water supply network and the overall system remains in the optimal energy-saving state.

Application Limits

- ◎ Medium temperature: normal temperature type 0°C ~68°C , hot water type 0°C ~120°C
- ◎ pH:5~9
- ◎ Maximum operating pressure: 1.0MPa
- ◎ Ambient temperature: -15°C ~40°C

Applications Fields

- ◎ Air conditioning system
- ◎ Filling machinery
- ◎ Environmental engineering
- ◎ Water supply and pressurization system
- ◎ Fertilization and metering system
- ◎ Cooling system
- ◎ Industrial cleaning
- ◎ Aquaculture
- ◎ Water treatment system application
- ◎ Supporting use of chiller

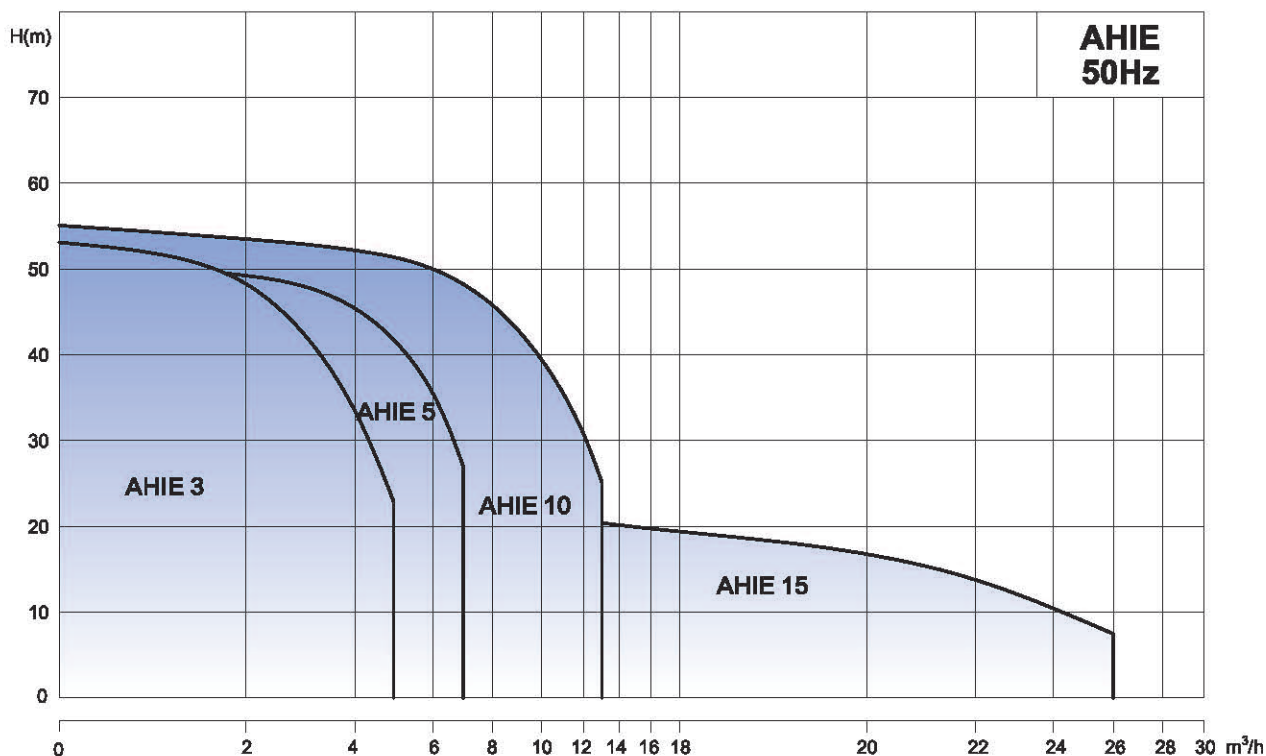
Certificate



Optional Available On Request

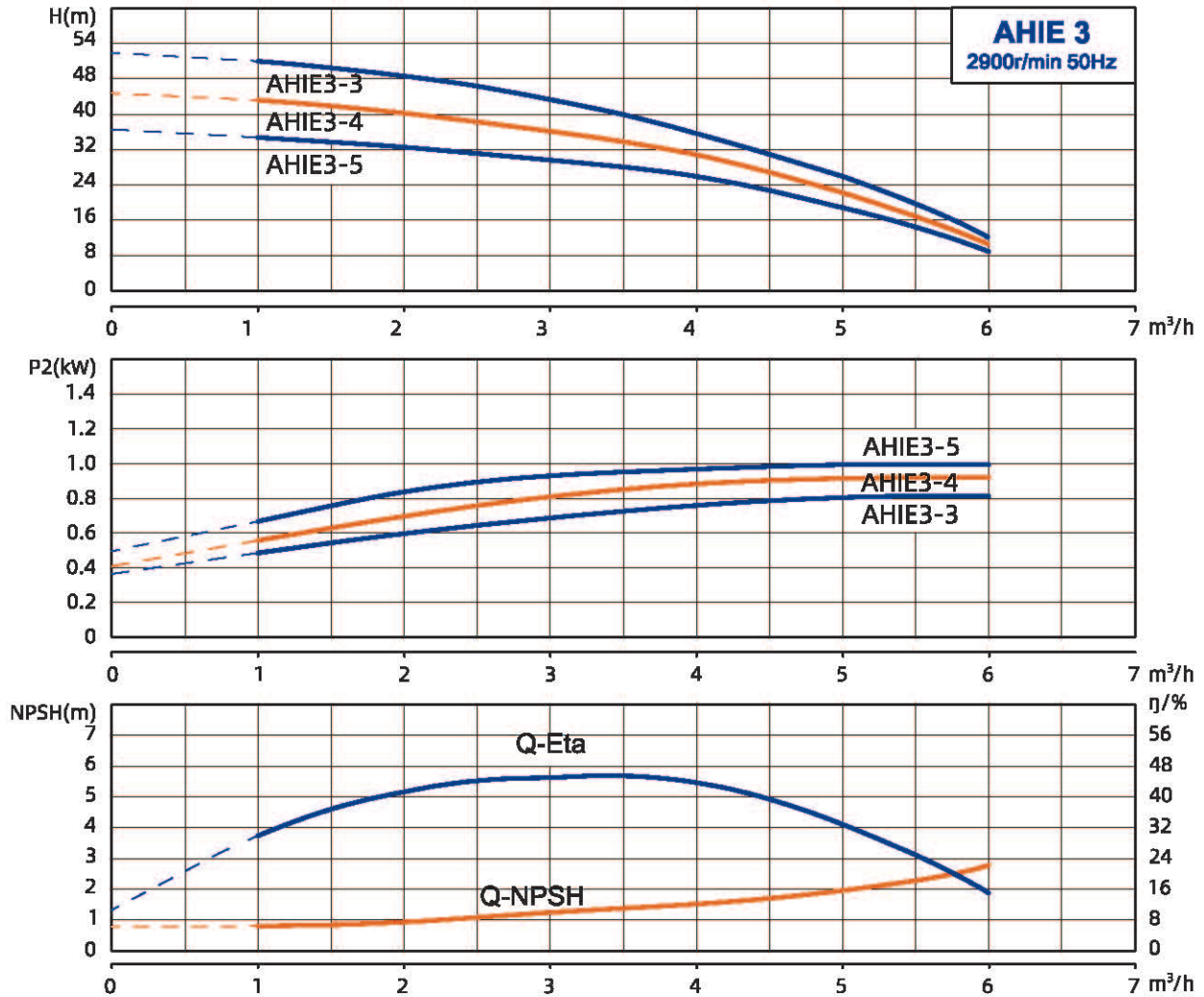
- ◎ Protection class: IP55
- ◎ Insulation class: F
- ◎ Working method: S1
- ◎ Voltage level: 220V/50Hz, 240V/50Hz

Performance Range



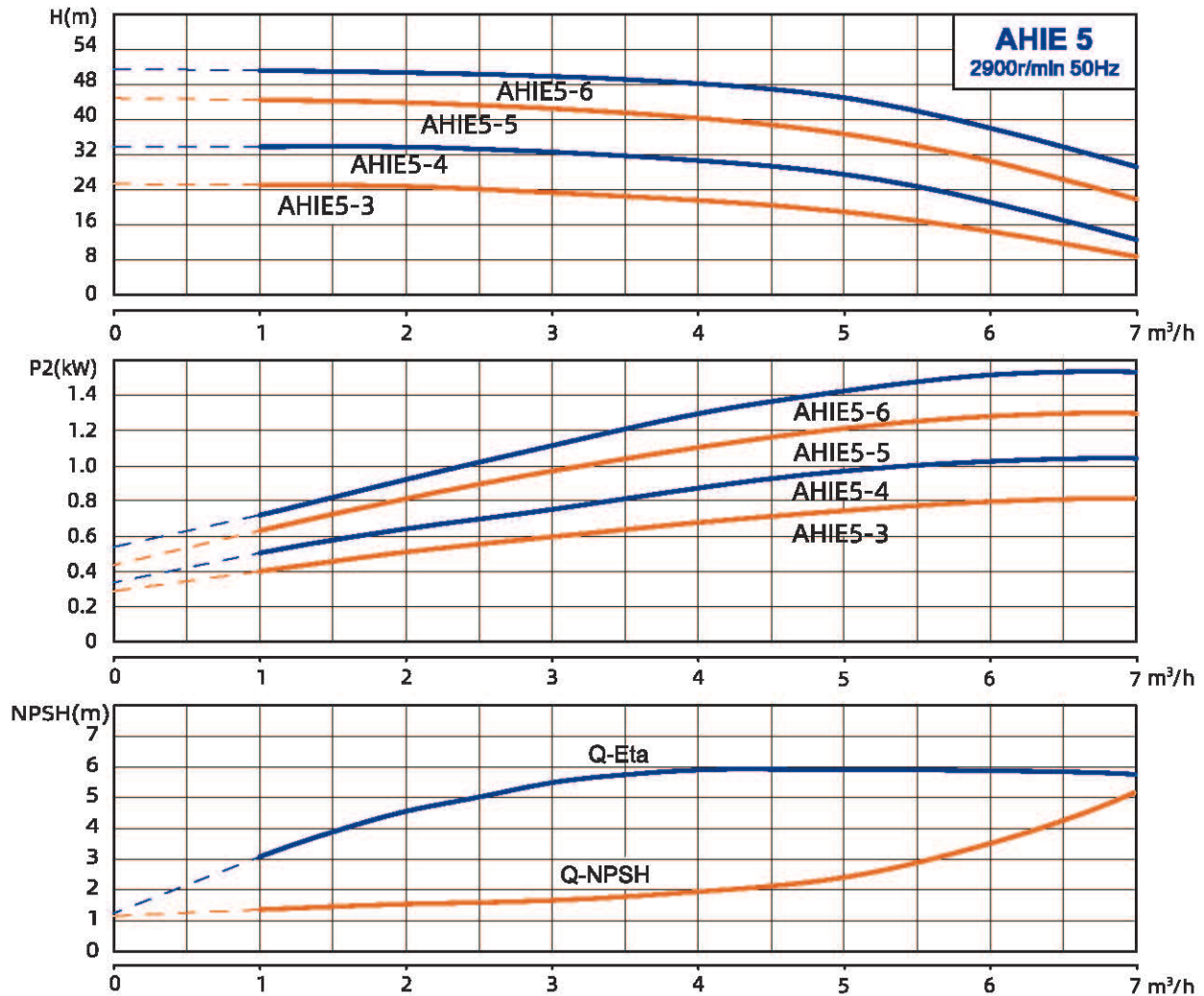
Model	Rated Voltage (V)	Rotation Speed (r/min)	Power (kW)	Rated Head (m)	Head Range (m)	Max. Head (m)	Rated Flow (m³/h)	Max. Flow (m³/h)	Packing Dim. (L*W*H) (mm)	N.W (kg)	Inlet-Outlet
AHIE3-4	220	2900	0.55	28	32-17	35	3	6	470x230x560	13	G1-G1
AHIE3-5	220		0.55	35	41-21	43	3	6	470x230x560	13.5	G1-G1
AHIE3-6	220		0.75	42	48-24	53	3	6	590x230x560	15	G1-G1
AHIE5-3	220		0.55	18.5	24-15	26	5	7.5	470x230x560	12.5	G1 ¹ / ₄ -G1
AHIE5-4	220		0.75	26	33-20	34	5	7.5	470x230x560	14	G1 ¹ / ₄ -G1
AHIE5-5	220		1.1	35	43-26	44.5	5	8	510x260x620	18	G1 ¹ / ₄ -G1
AHIE5-6	220		1.3	35	48-33	51	5	8.2	560x260x620	20	G1 ¹ / ₄ -G1
AHIE10-2	220		0.75	12.5	18-10	21	10	13.5	510x260x620	16	G1 ¹ / ₂ -G1 ¹ / ₂
AHIE10-3	220		1.1	21	30-17	34	10	14	510x260x620	21	G1 ¹ / ₂ -G1 ¹ / ₂
AHIE10-4	220		1.5	30	40-22	45	10	14	560x260x620	23	G1 ¹ / ₂ -G1 ¹ / ₂
AHIE10-5	220		1.8	39	51-28	57	10	14	560x260x620	25	G1 ¹ / ₂ -G1 ¹ / ₂
AHIE15-2	220		1.8	19.5	23-14	27	15	26	510x260x620	23	G2-G2

AHIE 3 Performance Curve



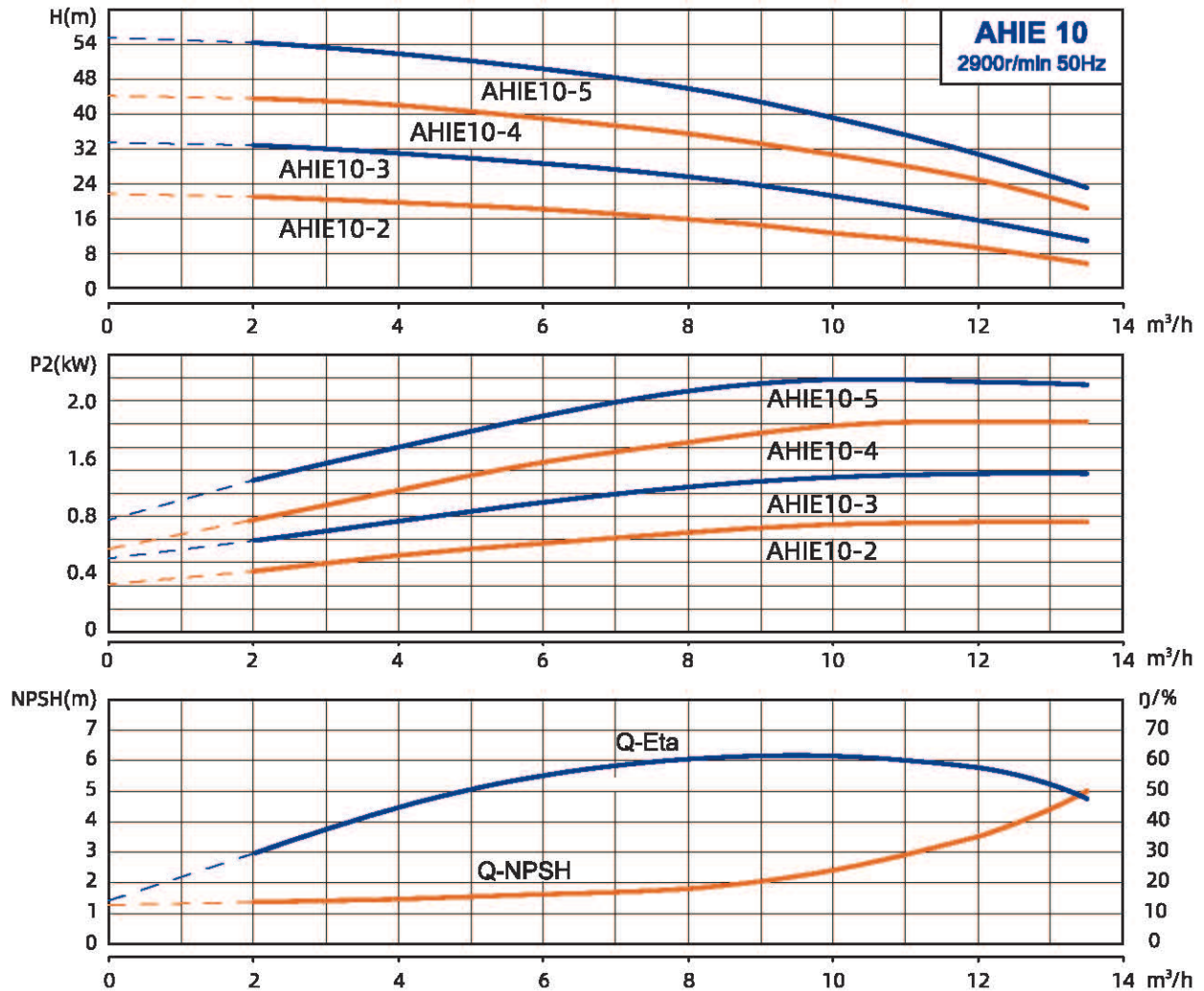
Model	Power	Q (m³/h)	0	1	2	3	4	5	6
AHIE3-4	0.55	H(m)	35.6	34.6	32	28.5	24.2	17.7	8.2
AHIE3-5	0.55		44	43.1	40.2	36.1	30.8	22.2	10.3
AHIE3-6	0.75		53.8	51.9	48.1	43.9	35	24.2	12.1

AHIE 5 Performance Curve



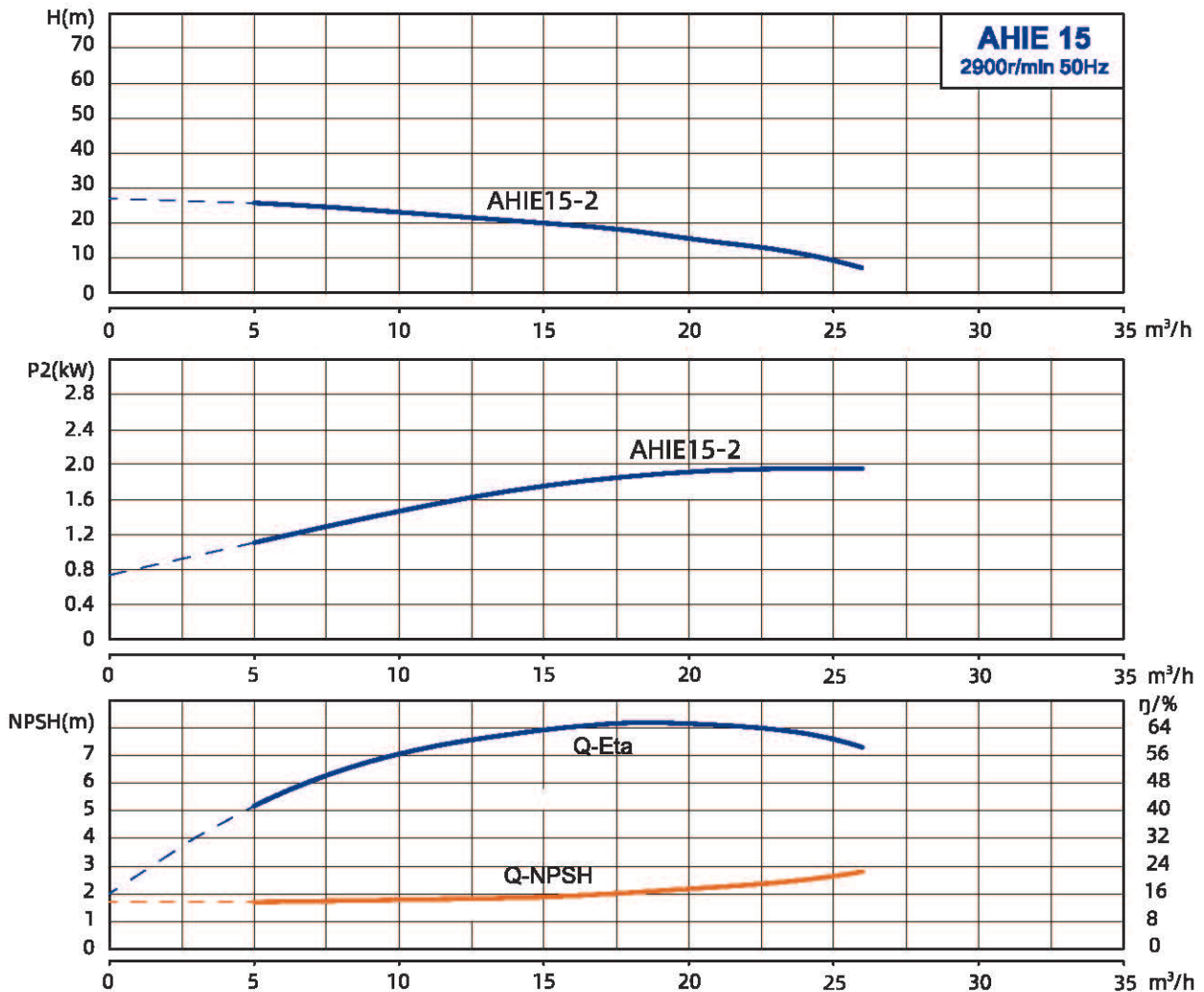
Model	Power	Q (m³/h)	0	1	2	3	4	5	6	7
AHIE5-3	0.55	H(m)	25.8	25.5	25.2	24	22.4	19.7	15.4	10.2
AHIE5-4	0.75		33.8	33.8	33.7	32.6	30.6	27.5	20	12.6
AHIE5-5	1.1		43.6	43.6	43.4	42.7	40.4	37	30.7	22.4
AHIE5-6	1.3		50.1	50.1	50	49.8	48.4	44.9	37.3	27.8

AHIE 10 Performance Curve



Model	Power	Q (m³/h)	0	2	4	6	8	10	12	13.5
AHIE10-2	0.75	H(m)	19.4	20.2	19.7	18.2	15.8	12.7	9.1	5.8
AHIE10-3	1.1		33.2	33.2	31.5	29.2	26.4	22.4	17.2	11
AHIE10-4	1.5		44.5	43.3	42.2	39.7	35.9	31.2	25.3	17.6
AHIE10-5	1.8		56.4	56.3	53.9	50.5	46.2	39.6	30.8	20.6

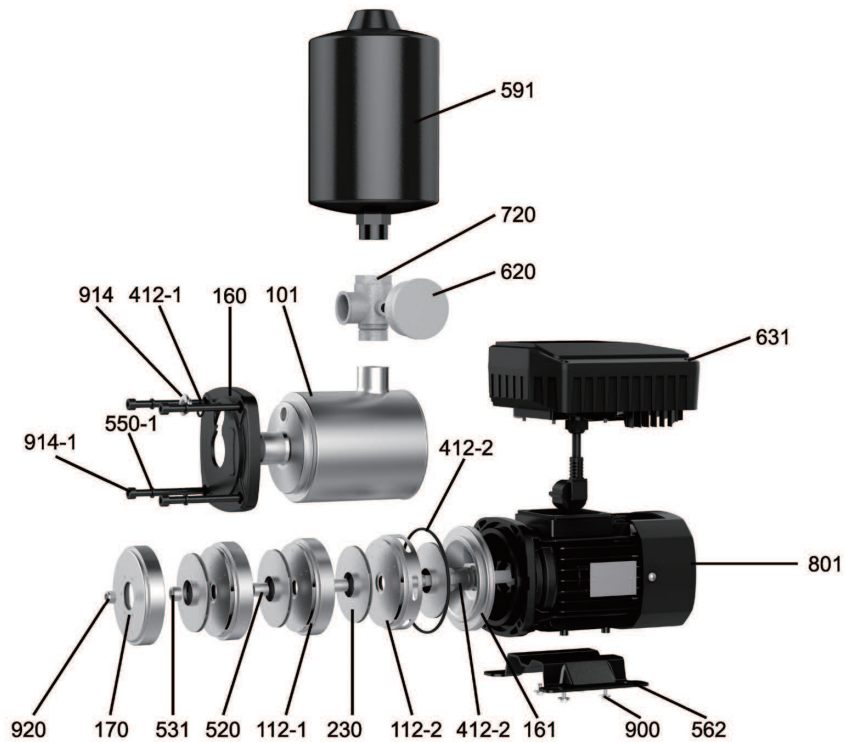
AHIE 5 Performance Curve



Model	Power	Q (m³/h)	0	5	10	15	18	20	24	26
AHIE15-2	1.8	H(m)	26.9	25.7	23	19.9	17.8	15.5	11	8

Components

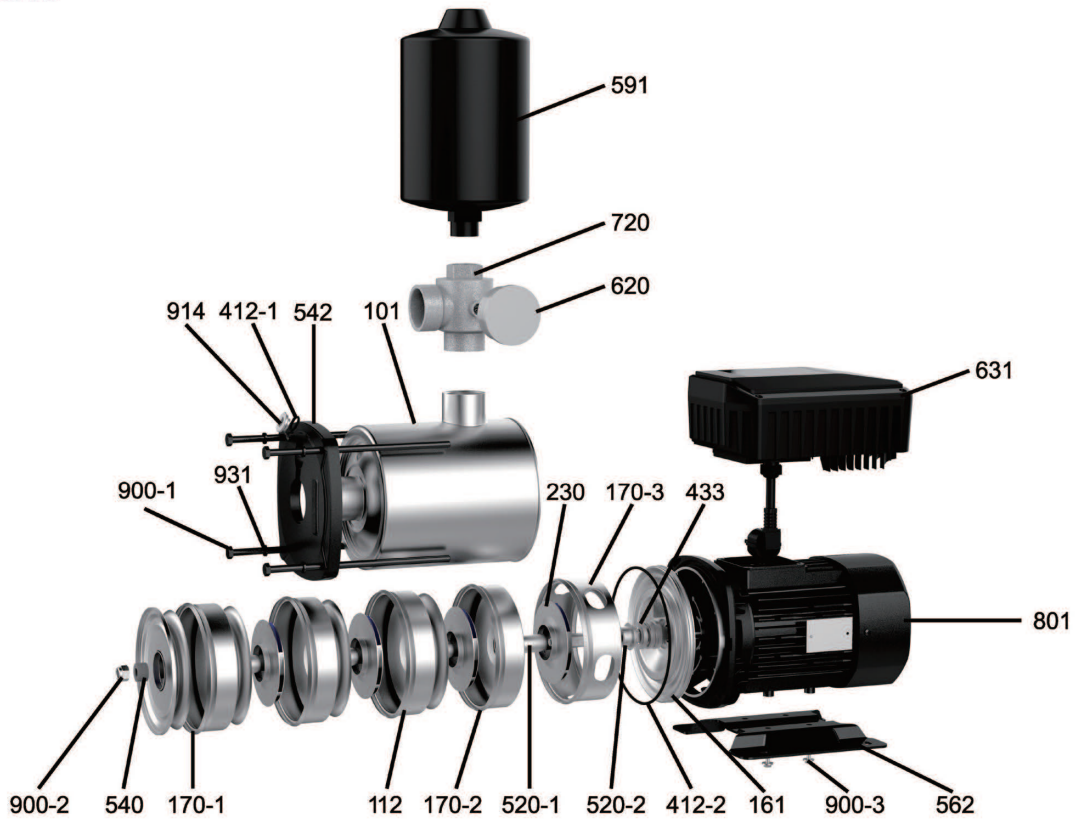
AHIE 3/5



No.	Component	No.	Component
101	Pressure Cylinder	550-1	Standard Spring Washer 8
112-1	Guide Vane	550-2	Adjusting Washer
112-2	Outlet Guide Vane	591	Pressure Tank
160	Pressure Plate	562	Base
161	Front Cover Assembly	620	Pressure Gauge
170	Inlet Guide Vane	631	Variable Frequency Drive (Inverter)
230	Impeller	720	Cross Fitting
412-1	O-ring Seal	801	Motor
412-2	O-ring Seal	900	Hexagon Flange Face Bolt
433	Mechanical Seal	914-1	Hexagon Socket Cap Screw
520	Long Bushing	914-2	Hexagon Socket Plug
531	Lining Bushing	920	Type I Non-metallic Insert Hexagon Lock Nut

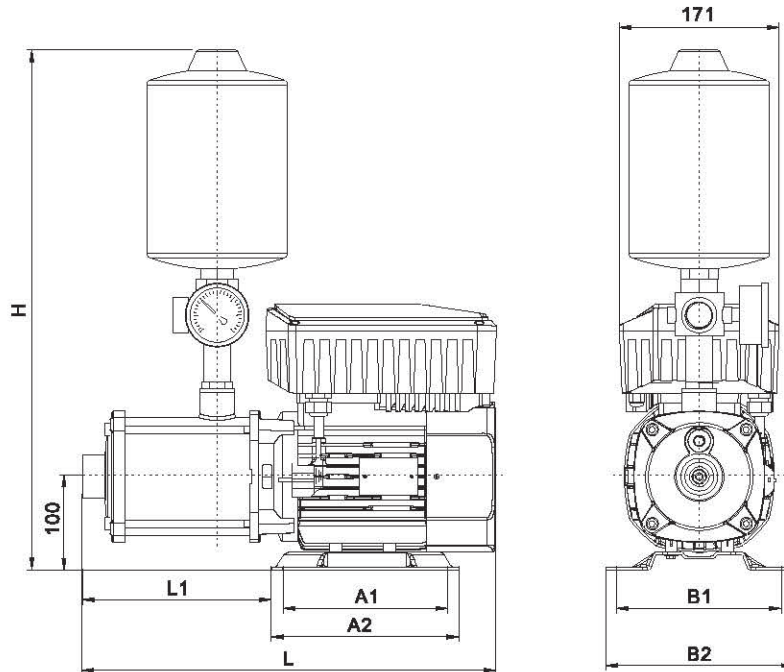
Components

AHIE 10/15



No.	Component	No.	Component
101	Pressure Cylinder	542	Platen
112-2	Outlet Guide Vane	562	Base
161-2	Front Cover Assembly	591	Pressure Tank
170	Inlet Deflector	620	Pressure Gauge
171	Final Stage Deflector	631	Frequency Changer
170-3	Outlet Deflector	720	Cross Fitting
230	Impeller	801	Motor
412-2	O-Ring	900	Hexagon Flange Face Bolt
412-1	O-Ring	900-1	I Prevailing Torque Type Hexagon Nuts
433	Shaft Seal	900-3	Hexagon Flange Bolt M5x10
520	Long Bushing	914	Hexagonal Socket Plug
520-4	Locking Shaft Sleeve	931	Double Spring Self-locking Washer
540	Bush		

Packing Sizes & Weight



Model	L (mm)	L1 (mm)	B1 (mm)	B2 (mm)	A1 (mm)	A2 (mm)	H (mm)	P	G.W (Kg)
AHIE3-4	354	166.5	125	158	96	140	491	G1	13
AHIE3-5	372	184.5	125	158	96	140	491	G1	13.5
AHIE3-6	410	220.5	125	158	96	140	491	G1	15
AHIE5-3	369	148.5	125	158	96	140	491	G11/4	12.5
AHIE5-4	387	166.5	125	158	96	140	491	G11/4	14
AHIE5-5	405	196	160	200	140	200	556	G11/4	18
AHIE5-6	441	232	160	200	140	200	556	G11/4	20
AHIE10-2	388	172	125	158	96	140	544	G11/2	16
AHIE10-3	418	219	160	200	140	200	544	G11/2	21
AHIE10-4	448	249	160	200	140	200	544	G11/2	23
AHIE10-5	478	277	160	200	140	200	544	G11/2	25
AHIE15-2	407	203	160	200	140	200	544	G2	23