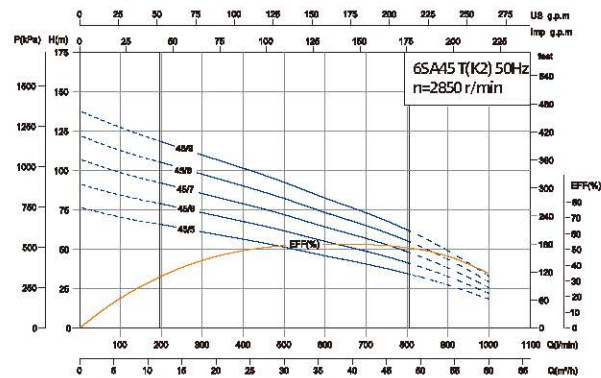
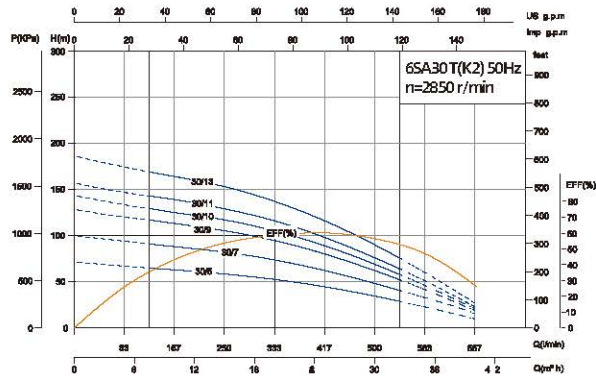
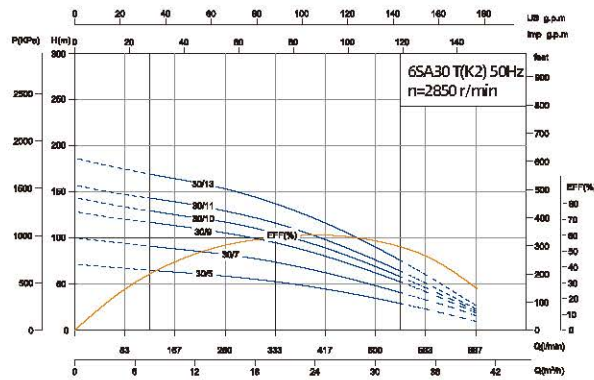
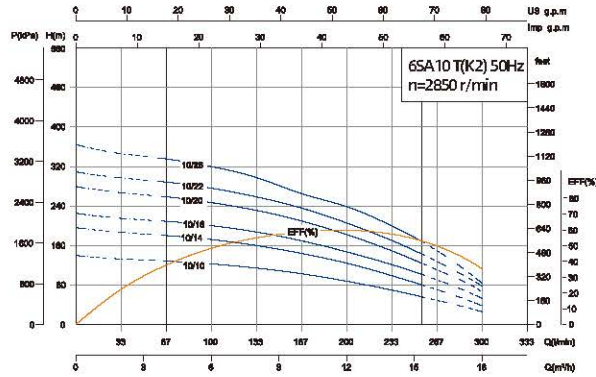


Performance Curve



Model	Power		Current (A)	Flow											Head Range (m)		
	Three-Phase	380V		kW	HP	Three-Phase	m ³ /h	0	2	4	6	8	10	12		14	16
			380V					l/min	0	33	67	100	133	167		200	233
6SA10/10T	5.5	7.5	13	H(m)		140	133	129	129	115	100	100	69	48	25	129~53	
6SA10/14T	7.5	10	18		196	186	181	181	160	140	140	97	67	34	181~77		
6SA10/16T	9.2	12.5	23		224	213	206	206	183	160	160	110	77	39	210~97		
6SA10/20T	11	15	26		280	266	258	258	229	200	200	138	96	49	260~119		
6SA10/22T	13	17.5	33		308	293	284	284	252	220	220	169	127	54	290~137		
6SA10/26T	15	20	35		364	346	335	335	298	260	260	200	150	64	338~161		

Model	Power		Current (A)	Flow											Head Range (m)		
	Three-Phase	380V		kW	HP	Three-Phase	m ³ /h	0	3	6	9	12	15	18		21	24
			380V					l/min	0	50	100	150	200	250		300	350
6SA18/6T	5.5	7.5	13	H(m)		85	82	79	75	68	60	54	41	29	16	80~32	
6SA18/9T	7.5	10	18		128	124	119	112	102	90	82	62	43	24	120~47		
6SA18/11T	9.2	12.5	23		156	151	145	137	125	110	100	76	53	29	146~58		
6SA18/13T	11	15	26		186	179	179	169	149	137	118	90	66	34	176~71		
6SA18/15T	13	17.5	33		213	205	198	188	170	150	135	103	73	37	199~79		
6SA18/18T	15	20	35		257	247	240	233	206	189	163	125	91	39	243~99		

Model	Power		Current (A)	Flow											Head Range (m)	
	Three-Phase	380V		kW	HP	Three-Phase	m ³ /h	0	5	10	15	20	25	30		35
			380V					l/min	0	83	167	250	333	417		500
6SA30/5T	5.5	7.5	13	H(m)		72	68	64	59	53	45	35	23	10	65~29	
6SA30/7T	7.5	10	18		100	94	88	82	73	63	48	32	14	91~41		
6SA30/9T	9.2	12.5	23		129	121	113	105	95	80	62	42	19	117~52		
6SA30/10T	11	15	26		143	134	125	117	105	89	69	46	21	143~64		
6SA30/11T	13	17.5	33		157	147	139	129	116	98	76	51	23	169~75		
6SA30/13T	15	20	35		186	174	164	153	137	116	90	60	27	195~87		

Model	Power		Current (A)	Flow											Head Range (m)			
	Three-Phase	380V		kW	HP	Three-Phase	m ³ /h	0	6	12	18	24	30	36		42	48	54
			380V					l/min	0	100	200	300	400	500		600	700	800
6SA45/5T	7.5	10	13	H(m)		76	71	66	61	56	51	46	41	35	27	18	66~36	
6SA45/6T	9.2	12.5	18		92	85	79	73	68	62	55	49	42	33	22	80~43		
6SA45/7T	11	15	23		107	99	92	82	79	72	64	57	48	38	26	93~50		
6SA45/8T	13	17.5	26		122	113	105	98	90	82	73	65	55	44	29	106~57		
6SA45/9T	15	20	33		137	127	118	110	101	92	82	73	62	49	33	119~65		

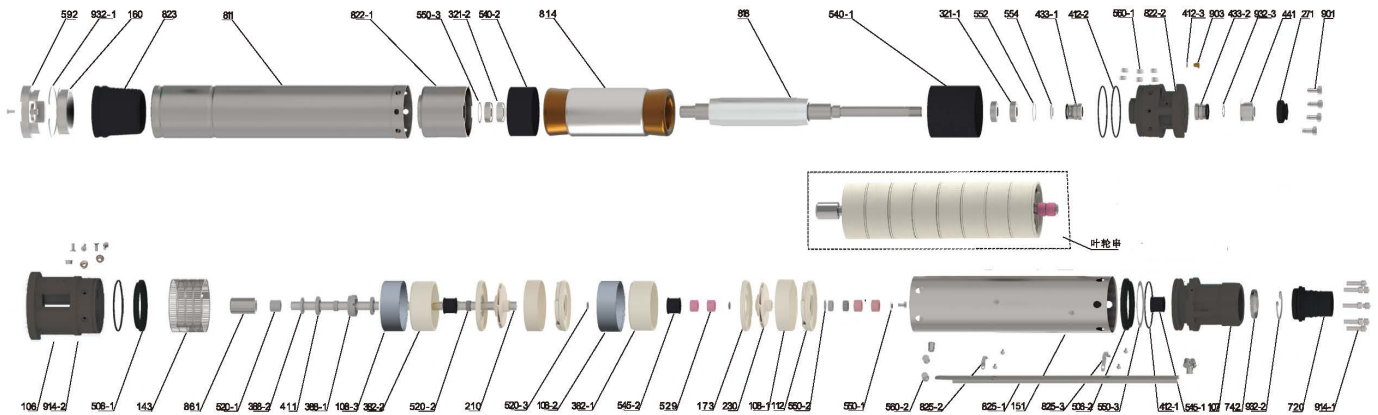
Model	Power		Flow											Head Range (m)	
	Three-Phase	kW	HP	m ³ /h	0	2	4	6	8	10	12	14	16		18
				380V	l/min	0	33	67	100	133	167	200	233		267
6SA10/10TK2	5.5	7.5	H(m)		140	133	129	123	115	100	87	69	48	25	129~53
6SA10/14TK2	7.5	10			196	186	181	172	160	140	122	97	67	34	181~77
6SA10/16TK2	9.2	12.5			224	213	206	197	183	160	139	110	77	39	210~97
6SA10/20TK2	11	15			280	266	258	246	229	200	174	138	96	49	260~119
6SA10/22TK2	13	17.5			308	293	284	272	252	220	202	169	127	54	290~137
6SA10/26TK2	15	20			364	346	335	320	298	260	239	200	150	64	338~161

Model	Power		Flow											Head Range (m)	
	Three-Phase	kW	HP	m ³ /h	0	3	6	9	12	15	18	21	24		27
				380V	l/min	0	50	100	150	200	250	300	350		400
6SA18/6TK2	5.5	7.5	H(m)		85	82	79	75	68	60	54	41	29	16	80~32
6SA18/9TK2	7.5	10			128	124	119	112	102	90	82	62	43	24	120~47
6SA18/11TK2	9.2	12.5			156	151	145	137	125	110	100	76	53	29	146~58
6SA18/13TK2	11	15			186	179	179	169	149	137	118	90	66	34	176~71
6SA18/15TK2	13	17.5			213	205	198	188	170	150	135	103	73	37	199~79
6SA18/18TK2	15	20			257	247	240	233	206	189	163	125	91	39	243~99

Model	Power		Flow											Head Range (m)
	Three-Phase	kW	HP	m ³ /h	0	5	10	15	20	25	30	35	40	
				380V	l/min	0	83	167	250	333	417	500	583	
6SA30/5TK2	5.5	7.5	H(m)		72	68	64	59	53	45	35	23	10	65~29
6SA30/7TK2	7.5	10			100	94	88	82	73	63	48	32	14	91~41
6SA30/9TK2	9.2	12.5			129	121	113	105	95	80	62	42	19	117~52
6SA30/10TK2	11	15			143	134	125	117	105	89	69	46	21	130~62
6SA30/11TK2	13	17.5			157	147	139	129	116	98	76	51	23	145~73
6SA30/13TK2	15	20			186	174	164	153	137	116	90	60	27	175~85

Model	Power		Current (A)	Flow												Head Range (m)	
	Three-Phase	kW	HP	Three-Phase	m ³ /h	0	6	12	18	24	30	36	42	48	54		60
				380V	l/min	0	100	200	300	400	500	600	700	800	900		1000
6SA45/5TK2	7.5	10	13	H(m)		76	71	66	61	56	51	46	41	35	27	18	65 ~ 20
6SA45/6TK2	9.2	12.5	18			92	85	79	73	68	62	55	49	42	33	22	78 ~ 25
6SA45/7TK2	11	15	23			107	99	92	82	79	72	64	57	48	38	26	90 ~ 29
6SA45/8TK2	13	17.5	26			122	113	105	98	90	82	73	65	55	44	29	103 ~ 33
6SA45/9TK2	15	20	33			137	127	118	110	101	92	82	73	62	49	33	116 ~ 37

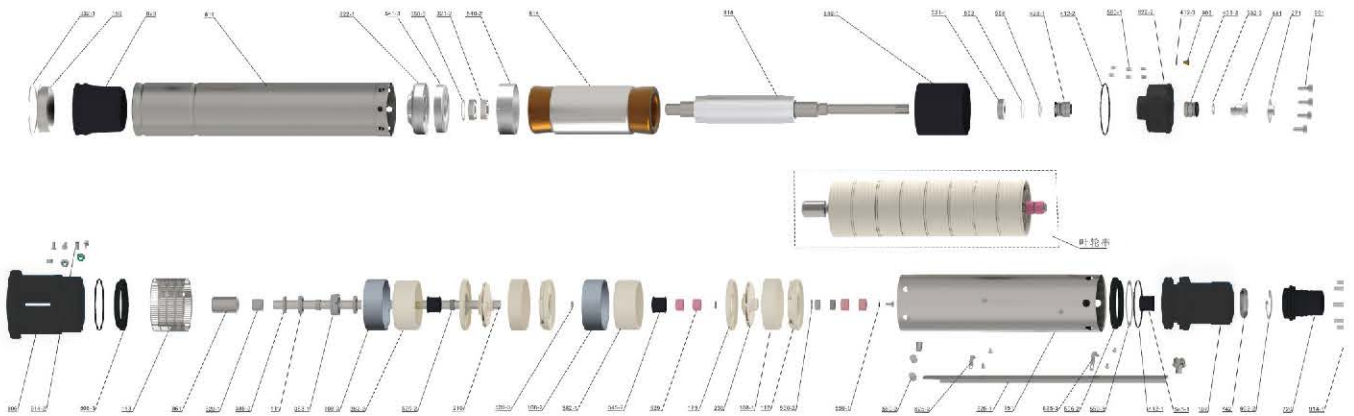
Components & Materials



6SA-S

No.	Part name	No.	Part name	No.	Part name
106	Inlet joint	412-2	O-ring	592	Base
107	Delivery chamber	412-3	O-ring	720	Outlet joint
108-1	Guide vane ring	433-1	Mechanical seal	742	Bonnet
108-2	Intermediate support seat ring	433-2	Mechanical seal	811	Casing
108-3	Lower support seat ring	441	Stainless steel sleeve	814	Stator core with winding
112	Flow deflector	506-1	Inlet joint ring	818	Rotor
143	Net cover	506-2	Delivery chamber ring	822-1	Lower bearing block
151	Upper sleeve	520-1	Spacer bush	822-2	Oil chamber
160	Bottom cover	520-2	Spacer bush	823	Pressure regulating film
173	Guide vane cover plate	520-3	Spacer bush	825-1	Cable pressing plate
210	Pump shaft	529	Shaft sleeve	825-2	Small pressing plate
230	Impeller	540-1	Upper spacer sleeve	825-3	Large pressing plate
231	Impeller string	540-2	Lower spacer sleeve	861	Coupling
321-1	Deep groove ball bearing	545-1	Lower rubber bearing	901	Outer hexagon flat screw
321-2	Angular contact ball bearing	545-2	Upper rubber bearing	903	Vent cock
382-1	Intermediate support seat	550-1	Pump shaft gasket	914-1	Hexagon socket head cap screw
382-2	Lower support seat	550-2	Adjusting washer	914-2	Hexagon socket countersunk head screw
271	Sand shaking sleeve	550-3	Adjusting washer	932-1	Retaining ring
388-1	Arresting disc fixing sleeve	552	Wave spring	932-2	Retaining ring
388-2	Arresting disc	554	Flat washer	932-3	Circlip for shaft
411	Friction pad	560-1	Locating sleeve		
412-1	O-ring	560-2	Locating pin		

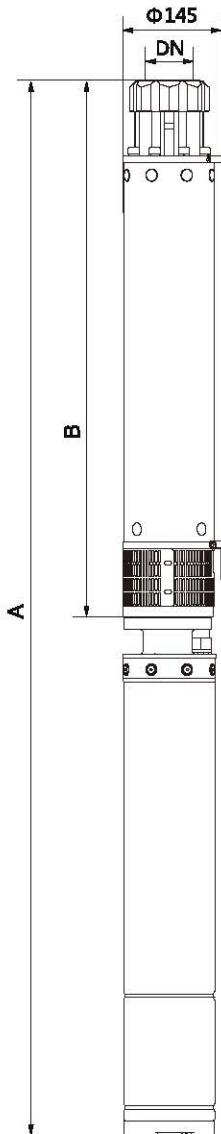
Components & Materials



6SA-SK2

No.	Part name	No.	Part name	No.	Part name
106	Water inlet	412-2	O-ring	560-2	Positioning pin
107	Extruding chamber	412-3	O-ring	720	Water outlet
108-1	Guide vane ferrule	433-1	Mechanical seal	742	Valve cover
108-2	Intermediate support seat ferrule	433-2	Mechanical seal	811	Enclosure
108-3	Lower support seat ferrule	441	Stainless steel sleeve	814	Stator core with winding
112	Conductor	506-1	Water inlet gasket	818	Rotor
143	Net cover	506-2	Extruding chamber gasket	822-1	Lower bearing housing
151	Upper sleeve	520-1	Spacer	822-2	Oil chamber
160	Bottom cover	520-2	Spacer	823	Pressure regulating film
173	Guide vane cover plate	520-3	Spacer	825-1	Cable hold-down plate
210	Pump shaft	529	Shaft sleeve	825-2	Small hold-down plate
230	Impeller	540-1	Upper stop sleeve	825-3	Big hold-down plate
231	Impeller string	540-2	2 Lower stop sleeve 2	861	Coupling
321-1	Deep groove ball bearing	540-3	1 Lower stop sleeve 1	901	Hexagon socket flat head screw
321-2	Angular contact ball bearing	545-1	Lower rubber bearing	903	Air relief cock
382-1	Intermediate support seat	545-2	Uppwer rubber bearing	914-1	Hexagon socket head cap screw
382-2	Lower support seat	550-1	Pump shaft washer	914-2	Hexagon socket countersunk head screw
271	Sand sleeve	550-2	Adjusting washer	932-1	Retaining ring
388-1	Retaining plate fixing sleeve	550-3	Adjusting washer	932-2	Retaining ring
388-2	Stop disc	552	Wave spring	932-3	Elastic circlip for shaft
411	Friction pad	554	Flat washer		
412-1	O-ring	560-1	Positioning sleeve		

Dimensions & Weight



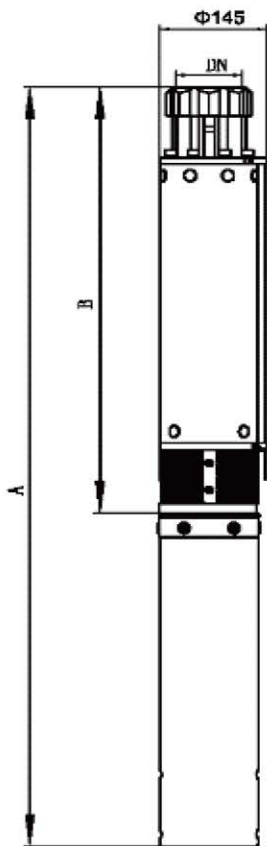
Model	Pipe Connection (DN)	Dim. (mm)		N.W.(kg)	
		B	A Three-phase	Body(kg)	Motor(kg) M(Single-phase)
6SA10/10T	G3	785	1586	18.5	40.0
6SA10/14T		935	1801	22.0	45.0
6SA10/16T		1080	2006	24.6	50.0
6SA10/20T		1235	2231	28.0	58.0
6SA10/22T		1315	2369	30.1	64.0
6SA10/26T		1615	2708	36.5	67.0

Model	Pipe Connection (DN)	Dim. (mm)		N.W.(kg)	
		B	A Three-phase	Body(kg)	Motor(kg) M(Single-phase)
6SA18/6T	G3	676	1478	16	40.0
6SA18/9T		815	1677	20.0	45.0
6SA18/11T		909	1836	21.5	50.0
6SA18/13T		1002	1999	23.0	58.0
6SA18/15T		1095	2152	25.0	64.0
6SA18/18T		1235	2332	28.0	67.0

Model	Pipe Connection (DN)	Dim. (mm)		N.W.(kg)	
		B	A Three-phase	Body(kg)	Motor(kg) M(Single-phase)
6SA30/5T	G3	665	1467	16.5	40.0
6SA30/7T		773	1635	18.1	45.0
6SA30/9T		880	1807	20.0	50.0
6SA30/10T		935	1932	21.0	58.0
6SA30/11T		988	2045	22.3	64.0
6SA30/13T		1096	2193	24.1	67.0

Model	Pipe Connection (DN)	Dim. (mm)		N.W.(kg)	
		B	A Three-phase	Body(kg)	Motor(kg) M(Single-phase)
6SA45/5T	G3	730	1592	18	45.0
6SA45/6T		797	1724	19	50.0
6SA45/7T		864	1861	20.5	58.0
6SA45/8T		930	1987	22	64.0
6SA45/9T		1059	2156	23	67.0

Dimensions & Weight



Model	Pipe Connection (DN)	Dim. (mm)		N.W.(kg)	
		B	A Three-phase	Body(kg)	Motor(kg) M(Single-phase)
6SA10/10TK2	G3	910	1670	18.5	31.5
6SA10/14TK2		1070	1890	22.5	36.8
6SA10/16TK2		1210	2090	24.6	42
6SA10/20TK2		1370	2250	27.5	50
6SA10/22TK2		1450	2450	30.1	56
6SA10/26TK2		1750	2800	36.5	60
6SA18/6TK2		800	1560	16	31.3
6SA18/9TK2		950	1770	20	36.8
6SA18/11TK2		1040	1920	21.5	42
6SA18/13TK2		1130	2010	23	50
6SA18/15TK2		1230	2230	25	56
6SA18/18TK2		1370	2420	28	60
6SA30/5TK2		800	1560	16.5	31.3
6SA30/7TK2		910	1730	18.1	36.8
6SA30/9TK2		1020	1900	20.5	42
6SA30/10TK2		1070	1950	21.4	50
6SA30/11TK2		1130	2130	22.3	56
6SA30/13TK2		1230	2280	25.5	60
6SA45/5TK2		860	1680	18	36.8
6SA45/6TK2		930	1810	19	42
6SA45/7TK2		1000	1880	20.5	50
6SA45/8TK2		1070	2070	22	56
6SA45/9TK2		1190	2240	23	60

Packing Size & Weight

Model	Dim. (mm)		G.W. (kg)	20"LoadinE Qty.(pcs)
	Motor(L×W×H)	Body(L×W×H)		
6SA10/10T	940x150x150	910x150x150	M:42.7 B:21.1	470
6SA10/14T	1000x150x150	1070x150x150	M:47.8 B:24.7	430
6SA10/16T	1060x150x150	1210x150x150	M:53 B:27.1	390
6SA10/20T	1130x150x150	1370x150x150	M:61.2 B:30.2	360
6SA10/22T	1190x150x150	1450x150x150	M:67.3 B:33	340
6SA10/26T	1230x150x150	1750x150x150	M:70.4 B:40	320

Model	Dim. (mm)		G.W. (kg)	20"LoadinE Qty.(pcs)
	Motor(L×W×H)	Body(L×W×H)		
6SA18/6T	940x150x150	800x150x150	M:42.7 B:18.7	470
6SA18/9T	1000x150x150	950x150x150	M:47.8 B:22	430
6SA18/11T	1060x150x150	1040x150x150	M:53 B:23.6	390
6SA18/13T	1130x150x150	1130x150x150	M:61.2 B:25.3	360
6SA18/15T	1190x150x150	1230x150x150	M:67.3 B:27.5	340
6SA18/18T	1230x150x150	1370x150x150	M:70.4 B:30.8	320

Model	Dim. (mm)		G.W. (kg)	20"LoadinE Qty.(pcs)
	Motor(L×W×H)	Body(L×W×H)		
6SA30/5T	940x150x150	800x150x150	M:42.7 B:18.2	470
6SA30/7T	1000x150x150	910x150x150	M:47.8 B:20	430
6SA30/9T	1060x150x15	1020x150x150	M:53 B:22.6	390
6SA30/10T	1130x150x150	1070x150x150	M:61.2 B:23.6	360
6SA30/11T	1190x150x150	1130x150x150	M:67.3 B:24.6	340
6SA30/13T	1230x150x150	1230x150x150	M:70.4 B:26.6	320

Model	Dim. (mm)		G.W. (kg)	20"LoadinE Qty.(pcs)
	Motor(L×W×H)	Body(L×W×H)		
6SA45/5T	1000x150x150	860x150x150	M:47.8 B:19.8	470
6SA45/6T	1060x150x150	930x150x150	M:53 B:20.9	430
6SA45/7T	1130x150x150	1000x150x150	M:61.2 B:22.6	390
6SA45/8T	1190x150x150	1070x150x150	M:67.3 B:24.2	360
6SA45/9T	1230x150x150	1190x150x150	M:70.4 B:25.4	340



Packing Size & Weight

Model	Dim. (mm)		G. W. (kg)	20"LoadinE Qty.(pcs)
	Motor(L×W×H)	Body(L×W×H)		
6SA10/10TK2	910×150×150	760×150×150	54	745
6SA10/14TK2	1070×150×150	820×150×150	63	658
6SA10/16TK2	1210×150×150	880×150×150	71	595
6SA10/20TK2	1370×150×150	880×150×150	83	553
6SA10/22TK2	1450×150×150	1000×150×150	92	507
6SA10/26TK2	1750×150×150	1050×150×150	103	444

Model	Dim. (mm)		G. W. (kg)	20"LoadinE Qty.(pcs)
	Motor(L×W×H)	Body(L×W×H)		
6SA18/6TK2	800×150×150	760×150×150	51	797
6SA18/9TK2	950×150×150	820×150×150	61	703
6SA18/11TK2	1040×150×150	880×150×150	67	648
6SA18/13TK2	1130×150×150	880×150×150	78	619
6SA18/15TK2	1230×150×150	1000×150×150	86	558
6SA18/18TK2	1370×150×150	1050×150×150	93	514

Model	Dim. (mm)		G. W. (kg)	20"LoadinE Qty.(pcs)
	Motor(L×W×H)	Body(L×W×H)		
6SA30/5TK2	800×150×150	760×150×150	51	797
6SA30/7TK2	910×150×150	820×150×150	59	719
6SA30/9TK2	1020×150×150	880×150×150	66	654
6SA30/10TK2	1070×150×150	880×150×150	76	638
6SA30/11TK2	1130×150×150	1000×150×150	83	584
6SA30/13TK2	1230×150×150	1050×150×150	89	545

Model	Dim. (mm)		G. W. (kg)	20"LoadinE Qty.(pcs)
	Motor(L×W×H)	Body(L×W×H)		
6SA45/5TK2	860×150×150	820×150×150	58	740
6SA45/6TK2	930×150×150	880×150×150	64	687
6SA45/7TK2	1000×150×150	880×150×150	75	661
6SA45/8TK2	1070×150×150	1000×150×150	83	601
6SA45/9TK2	1190×150×150	1050×150×150	88	555

