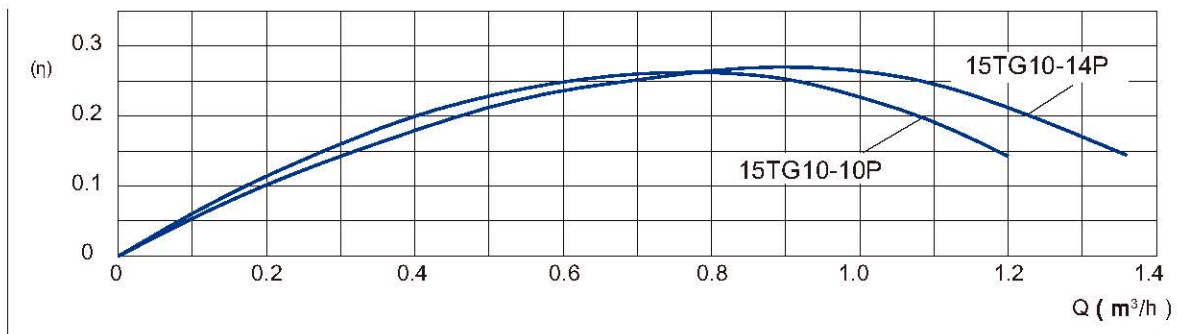
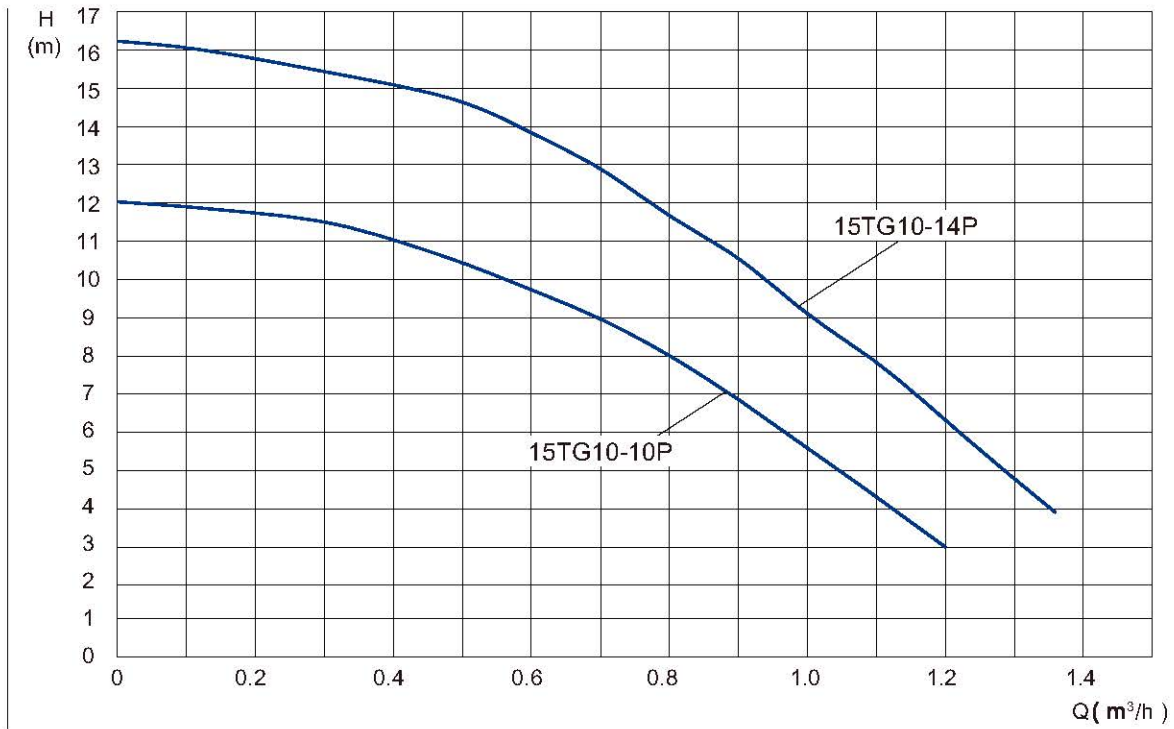
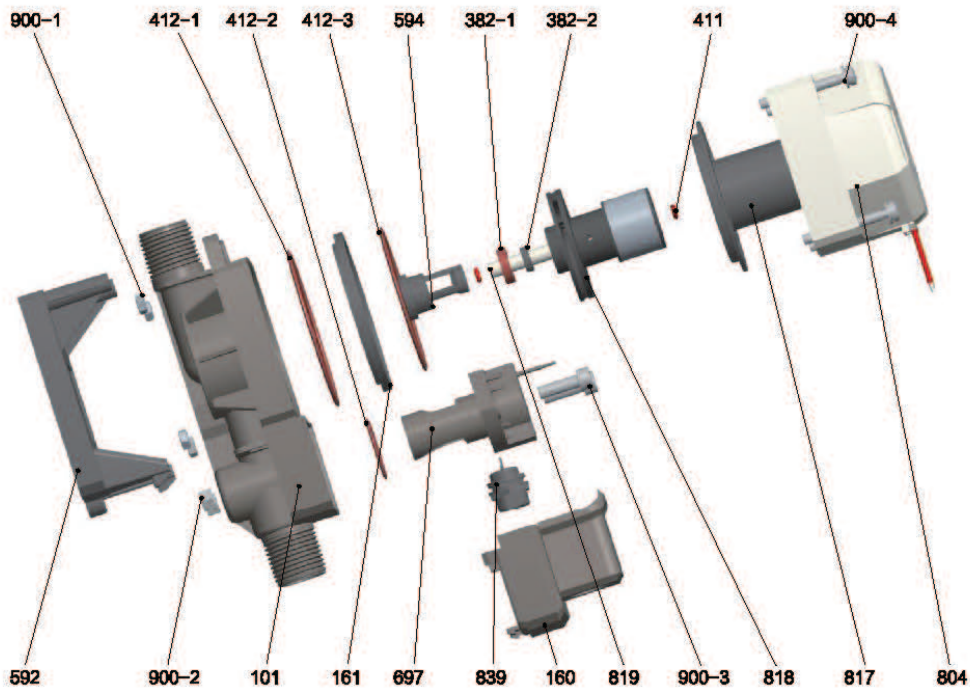


**Performance Curve**



Model	Speed	Input power P1(W)	Current(A)	Pipe Distance (mm)	Max. Head (m)	Whole Lift (m)	Max. flow (m³/h)	Inter Box			Outer Box		20" Loading Qty (pcs)
								G.W. (kg)	Dim.(LxWxH)	PCS/CTN	Dim (LxWxH)	G.W. (kg)	
15TG10-10P	1	72	2.7	15	12	10	10	1.2	180x145x115	12	465x370x250	15	**
15TG10-14P	1	100	2.5	15	16	14	10	1.3	180x145x115	12	465x370x250	16	**

## Components & Materials



No.	Component	No.	Component
900-4	Pan head screw group of cross recess	592	Support plate
900-3	Hexagon socket cap screw	412-3	O-sealing ring
900-2	Hexagon nut, style 1	412-2	O-sealing ring
900-1	Hexagon nut	412-1	O-sealing ring
839	Aviation plug	411	Outer diameter of shock pad
819	Shaft	382-2	Thrust bearing
818	Runner	382-1	Thrust bearing sleeve
817	Housing	161	Pump cover
804	Plastic package motor	160	Shield
697	Built-in flow switch	101	Pump body
594	Support pillar		

## Dimensions

Model	Dim.(mm)			Unions Or Flange	N.W. (kg)
	A	B	C		
15TG10-10P	147	67	96	G1/2	0.6
15TG10-14P	147	67	96	G1/2	0.6

