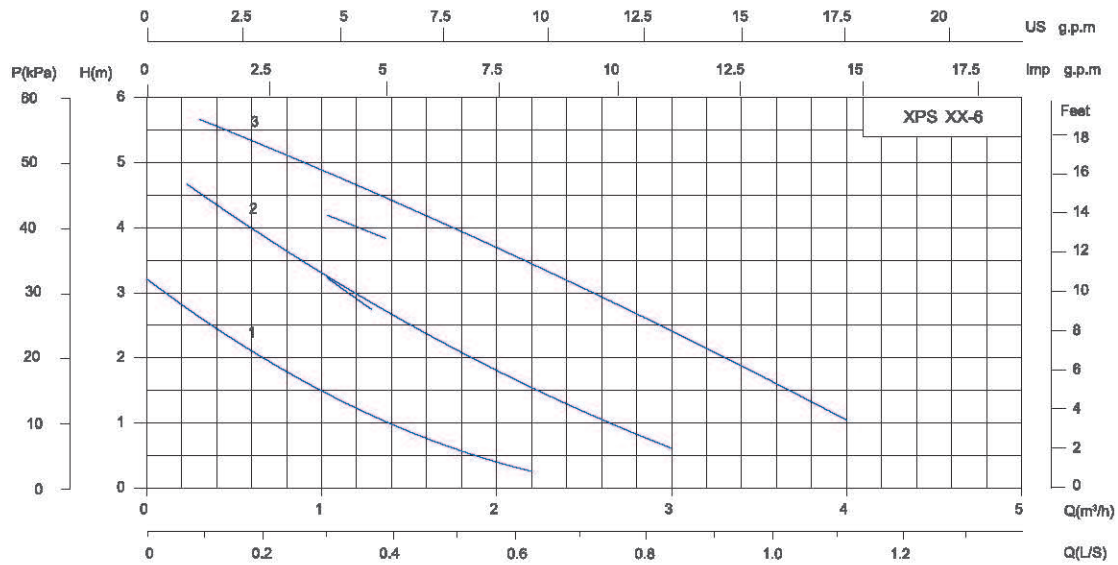
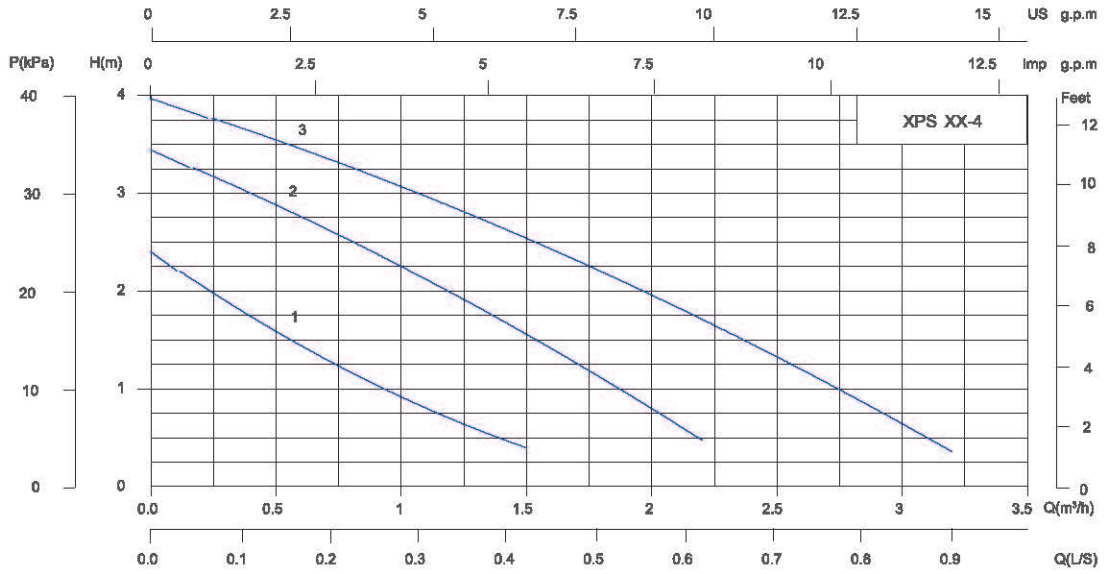
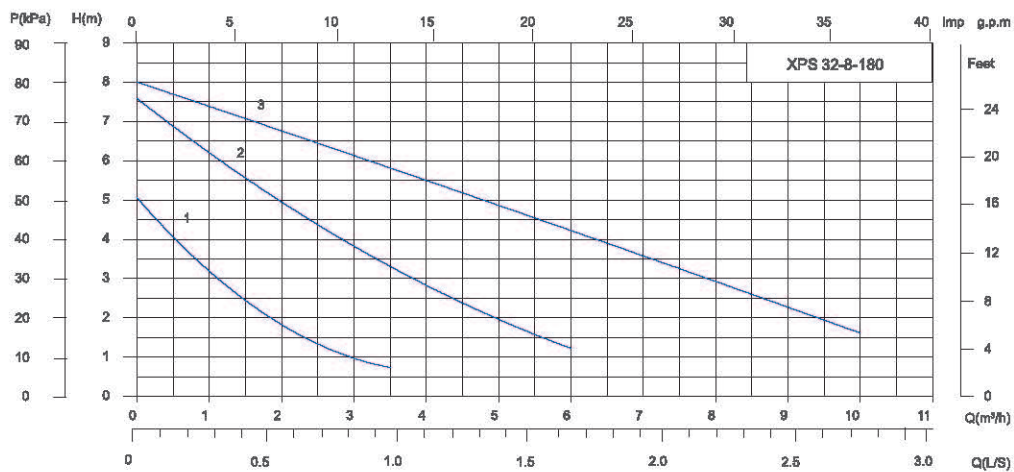
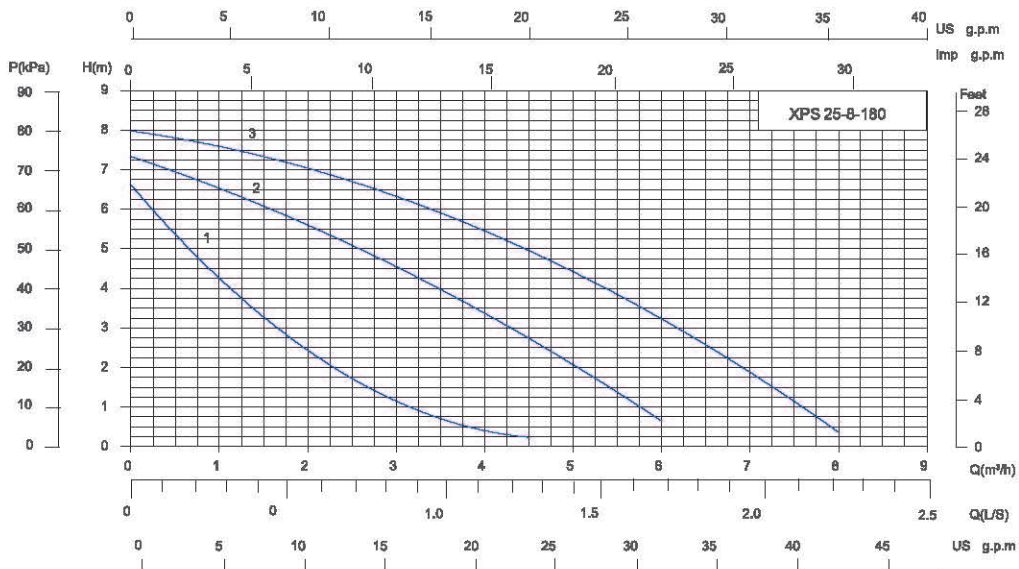
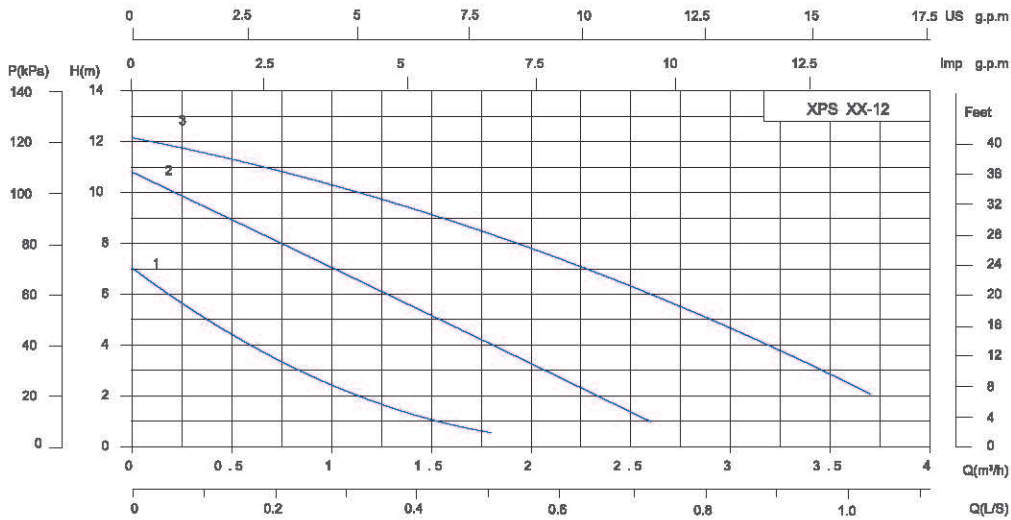


Performance Curve



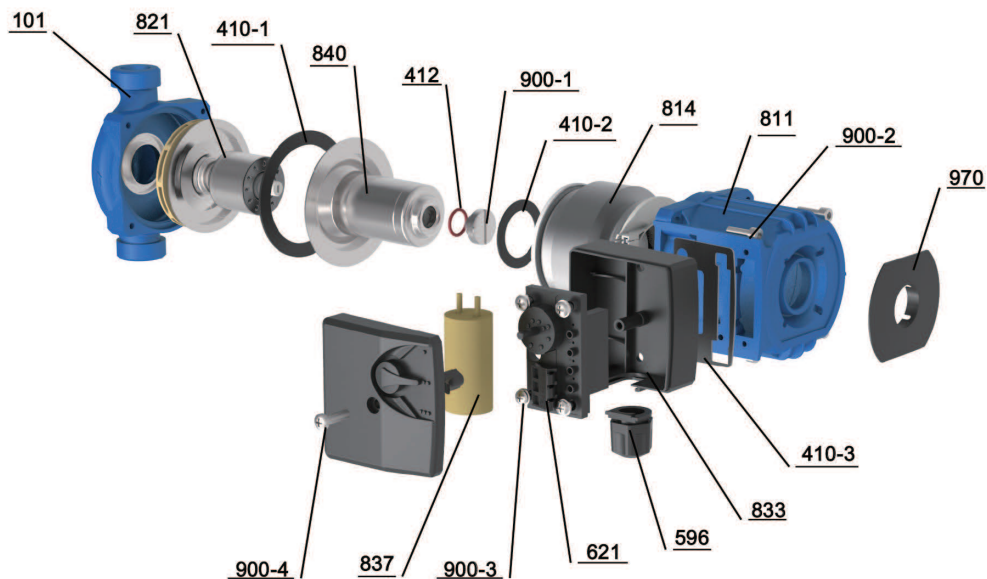
Performance Curve



Model	Speed	Input power P1(W)	Current(A)		Capacitor		Pipe Distance (mm)	Max. Head (m)	Whole Lift (m)	Max. flow (m³/h)	Inter Box		Outer Box		20" Loading Qty (pcs)	
			220V 60Hz	127V 60Hz	µF/450V 220V/60Hz	µF/250V 127V/60Hz					G.W. (kg)	Dim. (LxWxH)	PCS/ CTN	Dim (LxWxH)		G.W. (kg)
			XPS15-4-130	3	60	/					/	2	/	130		4
XPS15-4-130	2	45	/	/	2	/	130	4	0~4	2						
XPS15-4-130	1	30	/	/	2	/	130	4	0~4	2						
XPS15-6-130	3	90	0.4	0.8	2.5	6	130	6	0~6	2						
XPS15-6-130	2	65	0.3	0.65	2.5	6	130	6	0~6	2						
XPS15-6-130	1	45	0.2	0.41	2.5	6	130	6	0~6	2						
XPS15-9-140	3	120	0.48	0.83	3	10	140	9	0~9	1.6	2.8	180x120x135	3	380x260x290	23	5880
XPS15-9-140	2	85	0.38	0.66	3	10	140	9	0~9	1.6						
XPS15-9-140	1	60	0.26	0.45	3	10	140	9	0~9	1.6						
XPS20-4-130	3	60	/	/	2	/	130	4	0~4	2.2	2.4	150x130x140	8	320x280x300	22	6664
XPS20-4-130	2	45	/	/	2	/	130	4	0~4	2.2						
XPS20-4-130	1	30	/	/	2	/	130	4	0~4	2.2						
XPS20-6-130	3	90	0.4	0.8	2.5	6	130	6	0~6	2.2						
XPS20-6-130	2	65	0.3	0.65	2.5	6	130	6	0~6	2.2						
XPS20-6-130	1	45	0.2	0.41	2.5	6	130	6	0~6	2.2						
XPS25-4-130	3	60	/	/	2	/	130	4	0~4	3	3	150x130x140	8	320x280x300	25	4800
XPS25-4-130	2	45	/	/	2	/	130	4	0~4	3						
XPS25-4-130	1	30	/	/	2	/	130	4	0~4	3						
XPS25-6-130	3	90	0.4	0.8	2.5	6	130	6	0~6	3						
XPS25-6-130	2	65	0.3	0.65	2.5	6	130	6	0~6	3						
XPS25-6-130	1	45	0.2	0.41	2.5	6	130	6	0~6	3						

Model	Speed	Input power P1(W)	Current(A)		Capacitor		Pipe Distance (mm)	Max. Head (m)	Whole Lift (m)	Max. flow (m³/h)	Inter Box		Outer Box		20" Loading Qty (pcs)	
			220V 60Hz	127V 60Hz	µF/450V 220V/60Hz	µF/250V 127V/60Hz					G.W. (kg)	Dim. (LxWxH)	PCS/ CTN	Dim (LxWxH)		G.W. (kg)
			XPS25-4-180	3	60	/					/	2	/	180		4
XPS25-4-180	2	45	/	/	2	/	180	4	0~4	3						
XPS25-4-180	1	30	/	/	2	/	180	4	0~4	3						
XPS25-6-180	3	90	0.4	0.8	2.5	6	180	6	0~6	3						
XPS25-6-180	2	65	0.3	0.65	2.5	6	180	6	0~6	3						
XPS25-6-180	1	45	0.2	0.41	2.5	6	180	6	0~6	3						
XPS32-4-180	3	60	/	/	2	/	180	4	0~4	3.5	3.6	200x130x155	8	420x280x330	30	4800
XPS32-4-180	2	45	/	/	2	/	180	4	0~4	3.5						
XPS32-4-180	1	30	/	/	2	/	180	4	0~4	3.5						
XPS32-6-180	3	90	0.4	0.8	2.5	6	180	5	0~5	3.5						
XPS32-6-180	2	65	0.3	0.65	2.5	6	180	5	0~5	3.5						
XPS32-6-180	1	45	0.2	0.41	2.5	6	180	5	0~5	3.5						
XPS20-12-180	3	245	1.04	1.8	6	20	180	12	0~12	3	4.8				26	3200
XPS20-12-180	2	210	0.92	1.6	6	20	180	12	0~12	3						
XPS20-12-180	1	140	0.63	1.1	6	20	180	12	0~12	3						
XPS25-8-180	3	200	0.83	1.44	6	15	180	8	0~8	7	5	200x160x180	4	420x340x200	21	3200
XPS25-8-180	2	185	0.78	1.35	6	15	180	8	0~8	7						
XPS25-8-180	1	145	0.62	1.07	6	15	180	8	0~8	7						
XPS25-12-180	3	245	1.04	1.8	6	20	180	12	0~12	3.5						
XPS25-12-180	2	210	0.92	1.6	6	20	180	12	0~12	3.5						
XPS25-12-180	1	140	0.63	1.1	6	20	180	12	0~12	3.5						
XPS32-8-180	3	245	/	/	6	/	180	8	0~8	10	5.4				30	3200
XPS32-8-180	2	210	/	/	6	/	180	8	0~8	10						
XPS32-8-180	1	140	/	/	6	/	180	8	0~8	10						

Components & Materials



No.	Component	No.	Component
101	Pump body	970	Nameplate
412	Impeller	410-1	Rubber mat
596	O-ring	410-2	
621	Connecting piece	410-3	
811	Pump cover assembly	900-1	Vent cock
814	Flat gasket I	900-2	Hexagon socket head cap screw
821	Rotor assembly	900-3	Cross recessed pan head screw
833	Shield sleeve assembly	900-4	Cross recessed self-tapping screw
837	Flat gasket II		
840	Sheathed iron core with winding		

Dimensions

Model	Dim.(mm)									Unions Or Flange	N.W. (kg)
	H	H1	L	G	B	D1	D2	D3	D4		
XPS15-4-130	120	105	130	G¾"	125	-	-	-	-	G¾"to G½"	2.3
XPS15-6-130	120	102	140	G¾"	125	-	-	-	-	G¾"to G½"	2.3
XPS15-9-140	125	105	130	G¾"	105	-	-	-	-	G¾"to G½"	2.6
XPS20-4-130	130	105	130	G1"	130	-	-	-	-	G1"to G¾"	2.5
XPS20-6-130	130	105	130	G1"	130	-	-	-	-	G1"to G¾"	2.5
XPS25-4-130	130	105	130	G1½"	130	-	-	-	-	G1½"to G1"	2.8
XPS25-6-130	130	105	180	G1½"	130	-	-	-	-	G1½"to G1"	2.8
XPS25-4-180	130	105	180	G1½"	130	-	-	-	-	G1½"to G1"	3
XPS25-6-180	130	105	180	G1½"	130	-	-	-	-	G1½"to G1"	3
XPS32-4-180	130	105	180	G2"	130	-	-	-	-	G2"to G 1¼"	3.4
XPS32-6-180	130	105	180	G2"	130	-	-	-	-	G2"to G 1¼"	3.4
XPS20-12-180	160	135	180	G1"	150	-	-	-	-	G1"to G¾"	4.6
XPS25-8-180	160	130	180	G1½"	150	-	-	-	-	G1½"to G1"	4.8
XPS25-12-180	160	130	180	G1½"	150	-	-	-	-	G1½"to G1"	4.8
XPS32-8-180	170	130	180	G2"	150	-	-	-	-	G2"to G 1¼"	5.2

