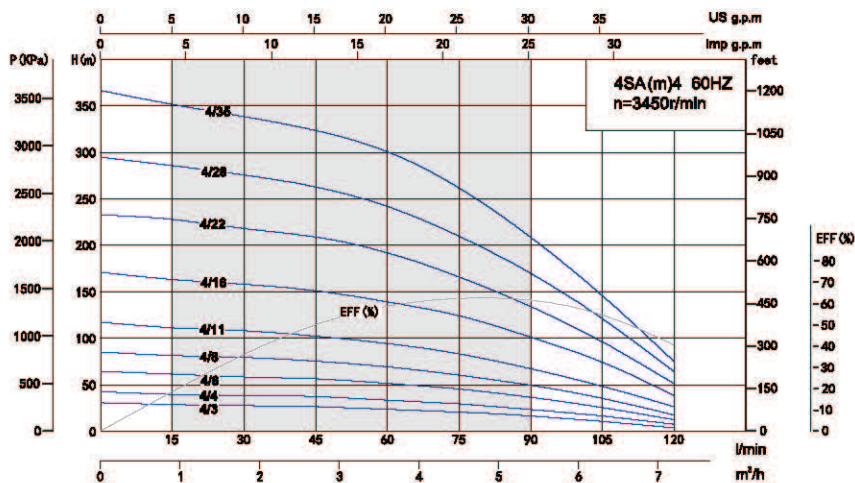
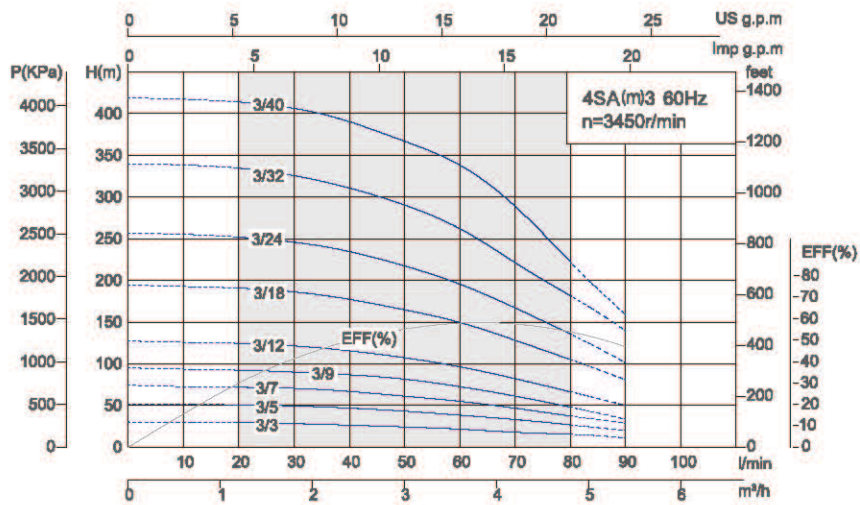
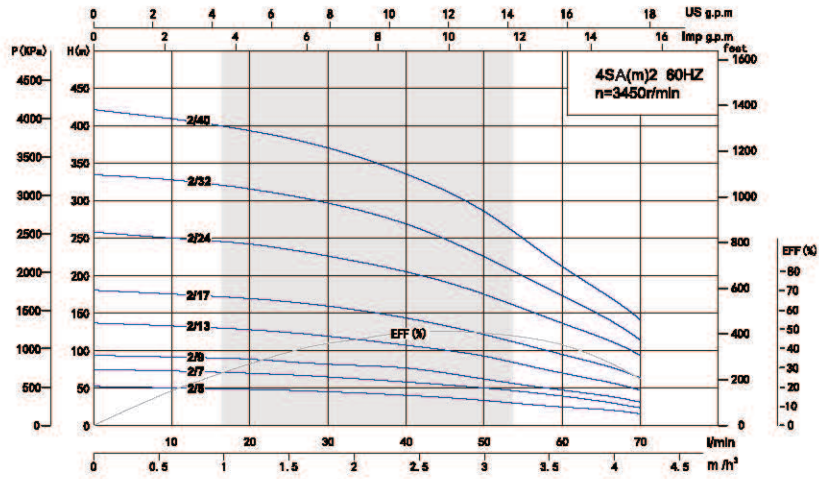
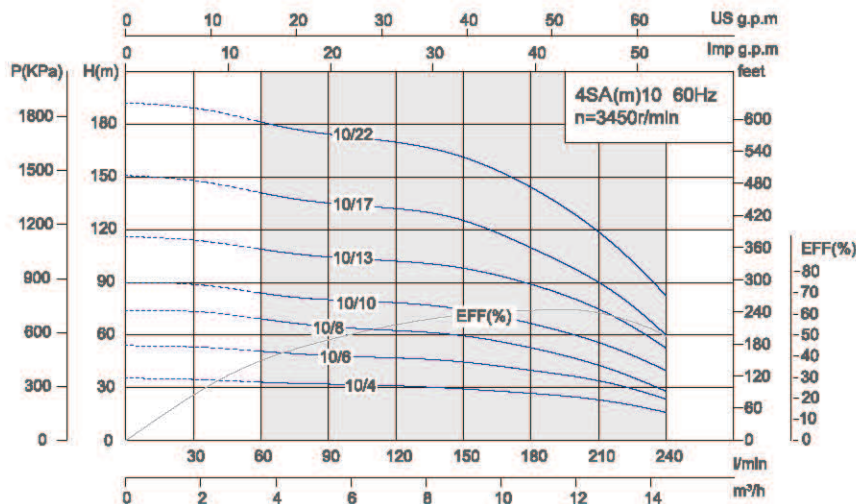
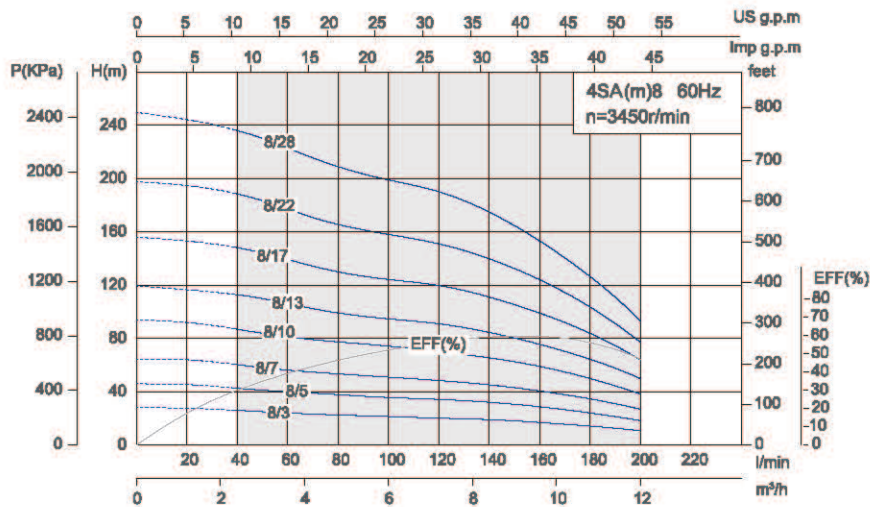
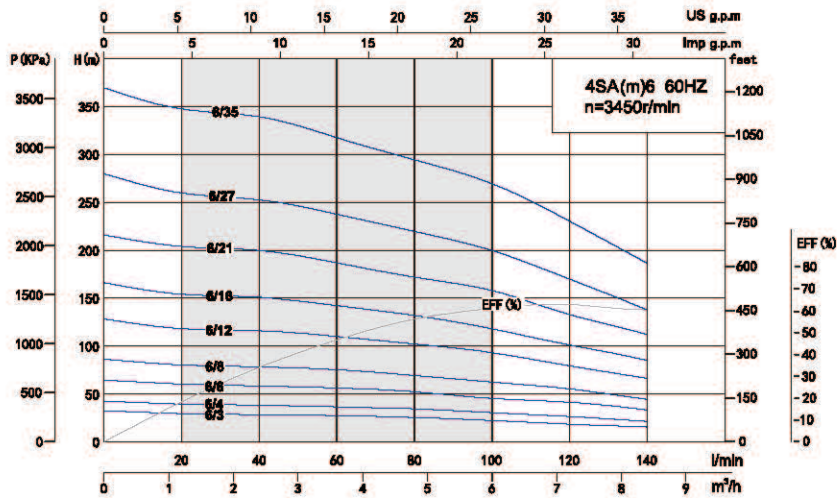


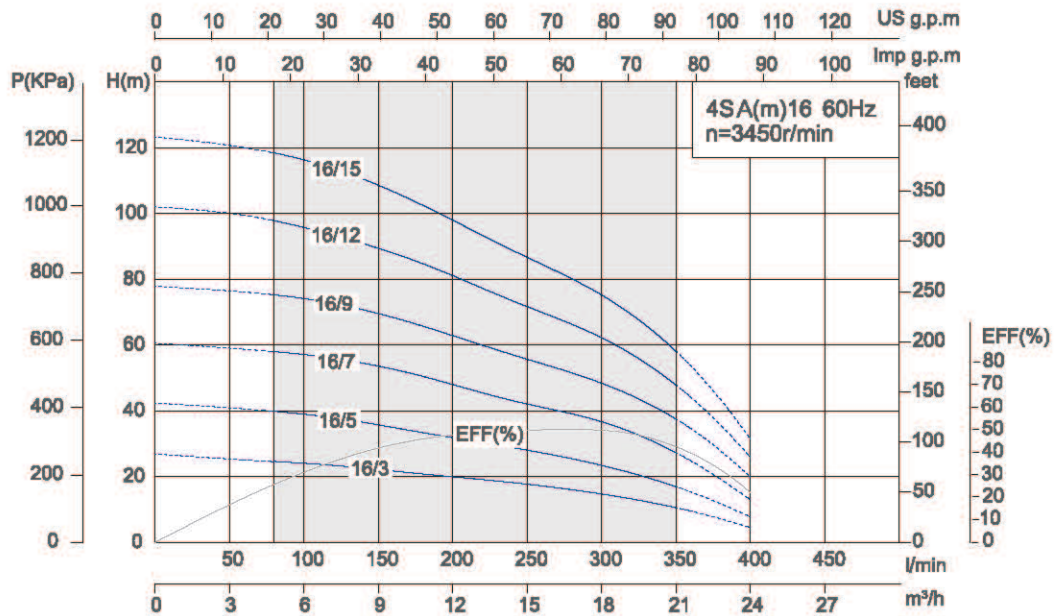
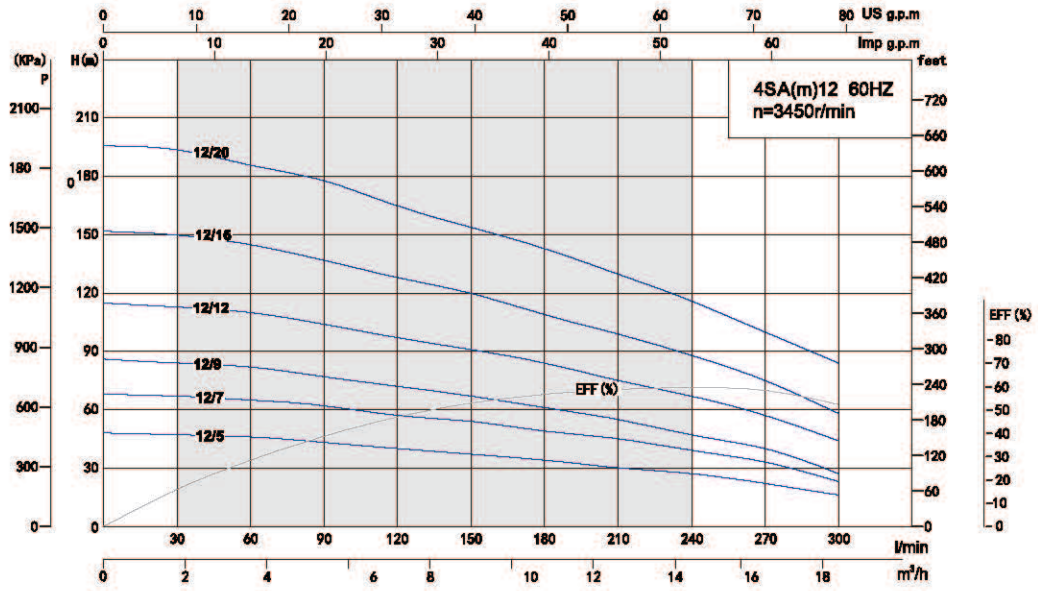
Performance Curve



**Performance Curve**



**Performance Curve**



Model		Power		Rate Current (A)				Flow									Head Range (m)
Single-Phase	Three-Phase	kW	HP	Single-Phase		Three-Phase		m <sup>3</sup> /h	0	0.6	1.2	1.8	2.4	3	3.6	4.2	
110V/220V	220V/380V			110V	220V	220V	380V		l/min	0	10	20	30	40	50	60	
4SAm2/5	-	0.37	0.5	7.2	3.5	-	-	H(m)	52	50	48	45	40	33	24	15	49~29
4SAm2/7	-	0.55	0.75	10.0	4.8	-	-		75	73	70	65	58	50	39	23	70~46
4SAm2/9	4SA2/9	0.75	1	12.4	6.3	4.5	2.6		94	92	89	82	77	62	47	31	90~60
4SAm2/13	4SA2/13	1.1	1.5	18.0	8.3	6.1	3.5		138	134	129	120	108	93	70	47	130~89
4SAm2/17	4SA2/17	1.5	2	-	11.3	7.6	4.4		180	175	169	159	143	121	94	63	170~110
4SAm2/24	4SA2/24	2.2	3	-	15.2	10.4	6.0		258	250	242	226	205	175	136	93	240~160
-	4SA2/32	3	4	-	-	14.1	8.1		335	328	316	297	269	225	173	114	310~188
-	4SA2/40	4	5.5	-	-	17.0	9.8		422	410	394	371	336	286	212	141	385~228

Model		Power		Rate Current (A)				Flow										Head Range (m)	
Single-Phase	Three-Phase	kW	HP	Single-Phase		Three-Phase		m <sup>3</sup> /h	0	0.6	1.2	1.8	2.4	3	3.6	4.2	4.8		5.4
110V/220V	220V/380V			110V	220V	220V	380V		l/min	0	10	20	30	40	50	60	70		80
4SAm3/3	-	0.37	0.5	7.2	3.5	-	-	H(m)	31	30.1	30	28	27	24	18	18	15	12	30~15
4SAm3/5	-	0.55	0.75	10.0	4.8	-	-		51	51	50	49	46	44	33	33	27	19	50~27
4SAm3/7	4SA3/7	0.75	1	12.4	6.3	4.5	2.6		75	72.2	72	70	67	62	46	46	37	28	72~37
4SAm3/9	4SA3/9	1.1	1.5	18.0	8.3	6.1	3.5		95	94	93	90	86	81	62	62	48	33	93~48
4SAm3/12	4SA3/12	1.5	2	-	11.3	7.6	4.4		127	126	125	121	116	107	82	82	67	50	125~67
4SAm3/18	4SA3/18	2.2	3	-	15.2	10.4	6.0		194	193	191	186	177	165	128	128	105	81	191~105
-	4SA3/24	3	4	-	-	14.1	8.1		257	255	252	246	235	217	167	167	136	101	252~136
-	4SA3/32	4	5.5	-	-	17.0	9.8		340	339	335	326	311	290	221	221	182	140	335~182
-	4SA3/40	5.5	7.5	-	-	21.8	12.8	419	417	414	406	390	367	289	289	222	159	414~222	

Model		Power		Rate Current (A)				Flow									Head Range (m)	
Single-Phase	Three-Phase	kW	HP	Single-Phase		Three-Phase		m <sup>3</sup> /h	0	0.9	1.8	2.7	3.6	4.5	5.4	6.3		7.2
110V/220V	220V/380V			110V	220V	220V	380V		l/min	0	15	30	45	60	75	90		105
4SAm4/3	-	0.37	0.5	7.2	3.5	-	-	H(m)	30	28	27	26	23	20	16	10	3	27~16
4SAm4/4	-	0.55	0.75	10.0	4.8	-	-		42	39	38	37	33	29	23	16	7	29~24
4SAm4/6	4SA4/6	0.75	1	12.4	6.3	4.5	2.6		64	61	58	56	51	45	36	25	12	58~36
4SAm4/8	4SA4/8	1.1	1.5	18.0	8.3	6.1	3.5		85	81	79	75	69	60	49	35	17	80~49
4SAm4/11	4SA4/11	1.5	2	-	11.3	7.6	4.4		117	111	108	102	94	83	67	48	26	109~69
4SAm4/16	4SA4/16	2.2	3	-	15.2	10.4	6.0		171	163	158	151	139	124	101	74	38	157~96
-	4SA4/22	3	4	-	-	14.1	8.1		233	228	218	209	192	166	134	96	51	207~122
-	4SA4/28	4	5.5	-	-	17.0	9.8		295	286	276	263	242	210	170	121	64	264~156
-	4SA4/35	5.5	7.5	-	-	21.8	12.8	367	352	339	324	301	262	209	146	75	335~198	

Model		Power		Rate Current (A)				Flow									Head Range (m)	
Single-Phase	Three-Phase	kW	HP	Single-Phase		Three-Phase		m <sup>3</sup> /h	0	1.2	2.4	3.6	4.8	6	7.2	8.4		9.6
110V/220V	220V/380V			110V	220V	220V	380V		l/min	0	20	40	60	80	100	120		140
4SAm6/3	-	0.55	0.75	10.0	4.8	-	-	H(m)	32	29	28	27	25	22	20	15	10	29~16
4SAm6/4	4SA6/4	0.75	1	12.4	6.3	4.5	2.6		42	39	38	36	34	30	26	21	15	38~21
4SAm6/6	4SA6/6	1.1	1.5	18.0	8.3	6.1	3.5		64	60	58	56	52	45	41	33	23	58~32
4SAm6/8	4SA6/8	1.5	2	-	11.3	7.6	4.4		86	80	78	75	69	62	55	44	33	79~44
4SAm6/12	4SA6/12	2.2	3	-	15.2	10.4	6.0		128	118	116	110	102	93	79	66	49	116~66
-	4SA6/16	3	4	-	-	14.1	8.1		166	154	151	142	132	118	101	85	61	152~85
-	4SA6/21	4	5.5	-	-	17.0	9.8		216	204	200	187	172	158	133	112	82	200~110
-	4SA6/27	5.5	7.5	-	-	21.8	12.8		280	260	253	238	220	200	170	138	100	253~138
-	4SA6/35	7.5	10	-	-	34.3	20.4	370	348	340	318	295	270	231	187	141	338~188	

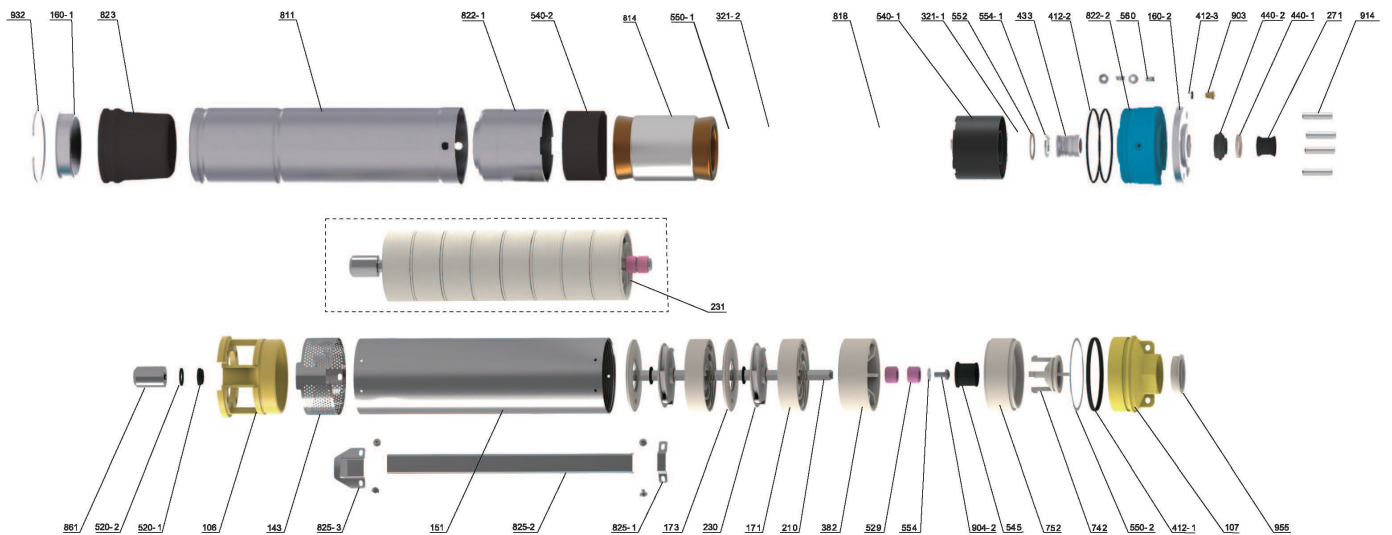
Model		Power		Rate Current (A)				Flow											Head Range (m)	
Single-Phase	Three-Phase	kW	HP	Single-Phase		Three-Phase		m <sup>3</sup> /h	0	1.2	2.4	3.6	4.8	6	7.2	8.4	9.6	10.8		12
110V/220V	220V/380V			110V	220V	220V	380V	l/min	0	20	40	60	80	100	120	140	160	180		200
4SAm8/3	4SA8/3	0.75	1	12.4	6.3	4.5	2.6	H(m)	28	27	26	24	23	21	20	19	17	14	11	26~11
4SAm8/5	4SA8/5	1.1	1.5	18.0	8.3	6.1	3.5		46	45	43	40	38	36	34	32	29	24	18	43~18
4SAm8/7	4SA8/7	1.5	2	-	11.3	7.6	4.4		65	64	60	56	53	51	48	45	41	35	27	60~27
4SAm8/10	4SA8/10	2.2	3	-	15.2	10.4	6.0		94	92	87	81	77	74	70	65	59	50	38	87~38
-	4SA8/13	3	4	-	-	14.1	8.1		119	117	113	106	99	95	91	85	76	64	50	113~50
-	4SA8/17	4	5.5	-	-	17.0	9.8		156	153	148	140	130	124	120	113	99	84	64	148~64
-	4SA8/22	5.5	7.5	-	-	21.8	12.8		198	195	188	177	166	158	151	140	124	104	77	188~77
-	4SA8/28	7.5	10	-	-	34.3	20.4		250	244	236	223	209	199	190	175	153	126	93	236~93

Model		Power		Rate Current (A)				Flow										Head Range (m)
Single-Phase	Three-Phase	kW	HP	Single-Phase		Three-Phase		m <sup>3</sup> /h	0	1.8	3.6	5.4	7.2	9	10.8	12.6	14.4	
110V/220V	220V/380V			110V	220V	220V	380V	l/min	0	30	60	90	120	150	180	210	240	
4SAm10/4	4SA10/4	1.1	1.5	18.0	8.3	6.1	3.5	H(m)	36	35	33	32	31	29	27	23	16	33~16
4SAm10/6	4SA10/6	1.5	2	-	11.3	7.6	4.4		54	53	51	48	47	45	40	34	24	51~24
4SAm10/8	4SA10/8	2.2	3	-	15.2	10.4	6.0		74	73	69	65	63	60	53	43	28	69~28
-	4SA10/10	3	4	-	-	14.1	8.1		90	89	84	80	78	74	67	56	40	84~40
-	4SA10/13	4	5.5	-	-	17.0	9.8		116	114	109	105	102	98	89	75	53	109~53
-	4SA10/17	5.5	7.5	-	-	21.8	12.8		151	148	141	135	132	125	110	90	60	141~60
-	4SA10/22	7.5	10	-	-	34.3	20.4		192	189	181	174	170	161	144	119	82	181~82

Model		Power		Rate Current (A)				Flow											Head Range (m)	
Single-Phase	Three-Phase	kW	HP	Single-Phase		Three-Phase		m <sup>3</sup> /h	0	1.8	3.6	5.4	7.2	9.0	10.8	12.6	14.4	16.2		18.0
110V/220V	220V/380V			110V	220V	220V	380V	l/min	0	30	60	90	120	150	180	210	240	270		300
4SAm12/5	4SA12/5	1.5	2	-	11.3	7.6	4.4	H(m)	48	47	46	43	40	37	34	30	27	22	16	38~24
4SAm12/7	4SA12/7	2.2	3	-	15.2	10.4	6.0		68	67	65	62	57	54	49	45	39	33	23	55~35
-	4SA12/9	3	4	-	-	14.1	8.1		86	84	82	77	72	67	61	55	47	40	27	69~43
-	4SA12/12	4	5.5	-	-	17.0	9.8		115	113	110	104	97	91	84	75	67	57	44	93~61
-	4SA12/16	5.5	7.5	-	-	21.8	12.8		152	150	145	137	128	120	109	99	88	75	58	123~80
-	4SA12/20	7.5	10	-	-	30.6	18.0		196	194	186	178	165	154	143	130	116	100	84	157~105

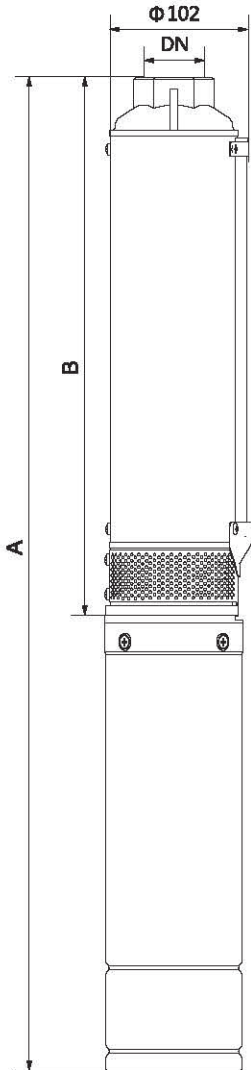
Model		Power		Rate Current (A)				Flow										Head Range (m)
Single-Phase	Three-Phase	kW	HP	Single-Phase		Three-Phase		m <sup>3</sup> /h	0	3	6	9	12	15	18	21	24	
110V/220V	220V/380V			110V	220V	220V	380V	l/min	0	50	100	150	200	250	300	350	400	
4SAm16/3	4SA16/3	1.5	2	-	11.3	7.6	4.4	H(m)	27	25	24	22	20	18	15	11	5	25~11
4SAm16/5	4SA16/5	2.2	3	-	15.2	10.4	6.0		43	41	40	36	31	28	24	18	8	40~18
-	4SA16/7	3	4	-	-	14.1	8.1		61	60	57	54	48	42	36	27	13	58~27
-	4SA16/9	4	5.5	-	-	17.0	9.8		78	77	74	70	63	55	48	37	20	75~37
-	4SA16/12	5.5	7.5	-	-	21.8	12.8		101	100	96	89	81	72	62	48	26	98~48
-	4SA16/15	7.5	10	-	-	34.3	20.4		123	121	116	108	98	87	75	58	31	118~58

## Components & Materials



No.	Part name	No.	Part name	No.	Part name
106	Inlet joint	412-2	O-ring	742	Bonnet
107	Delivery chamber	412-3	O-ring	811	Casing
143	Net cover	433	Mechanical seal	814	Stator core with winding
151	Sleeve	440-1	Anti-sand pad	818	Rotor
160-1	Bottom cover	440-2	Anti-sand seat	822-1	Lower bearing block
160-2	Cover plate	520-1	Spacer bush	822-2	Oil chamber
171	Guide vane	520-2	Spacer bush	823	Pressure regulating film
173	Guide vane cover plate	529	Shaft sleeve	825-1	Small pressing plate
210	Pump shaft	540-1	Upper spacer sleeve	825-2	Cable pressing plate
230	Impeller	540-2	Lower spacer sleeve	861	Coupling
231	Impeller string	545	Middle rubber bearing	903	Vent cock
271	Sand shaking sleeve	550-1	Adjusting washer	914	Hexagon socket set screw
321-1	Deep groove ball bearing	550-2	Adjusting washer	932	Retaining ring
321-2	Angular contact bearing	552	Wave spring	955	Dust cover
382	Middle bearing block	554	Flat washer		
412-1	O-ring	560	Locating pin		

## Dimensions & Weight



Model		Pipe Connection (DN)	Dim. (mm)			N.W.(kg)		
Single-phase	Three-phase		B	A Single-Phase	Three-phase	Body(kg)	Motor(kg)	
						Single-phase	Three-phase	
4SAm2/5	-	G1¼ NPT1¼	317	641	-	2.6	7.7	-
4SAm2/7	-		367	711	-	3.0	8.7	-
4SAm2/9	4SA2/9		417	786	834	3.4	9.8	9.7
4SAm2/13	4SA2/13		515	919	919	4.3	11.5	10.8
4SAm2/17	4SA2/17		615	1064	1077	5.0	13.6	11.4
4SAm2/24	4SA2/24		824	1333	1341	6.4	16.4	13.8
-	4SA2/32		1058	-	1648	8.2	-	17.2
-	4SA2/40		1291	-	1936	9.4	-	19.8

Model		Pipe Connection (DN)	Dim. (mm)			N.W.(kg)		
Single-phase	Three-phase		B	A Single-Phase	Three-phase	Body(kg)	Motor(kg)	
						Single-phase	Three-phase	
4SAm3/3	-	G1¼ NPT1¼	275	599	-	2.1	7.7	-
4SAm3/5	-		327	671	-	2.6	8.7	-
4SAm3/7	4SA3/7		379	748	738	3.0	9.8	9.7
4SAm3/9	4SA3/9		431	835	825	3.4	11.5	10.8
4SAm3/12	4SA3/12		510	959	925	4.0	13.6	11.4
4SAm3/18	4SA3/18		666	1175	1136	5.3	16.4	13.8
-	4SA3/24		892	-	1424	6.7	-	17.2
-	4SA3/32		1101	-	1688	8.5	-	19.8
-	4SA3/40	1344	-	2006	10.5	-	23.0	

Model		Pipe Connection (DN)	Dim. (mm)			N.W.(kg)		
Single-phase	Three-phase		B	A Single-Phase	Three-phase	Body(kg)	Motor(kg)	
						Single-phase	Three-phase	
4SAm4/3	-	G1¼ NPT1¼	280	604	-	2.2	7.7	-
4SAm4/4	-		309	653	-	2.5	8.7	-
4SAm4/6	4SA4/6		367	736	785	3.0	9.8	9.7
4SAm4/8	4SA4/8		425	829	878	3.4	11.5	10.8
4SAm4/11	4SA4/11		512	962	975	4.0	13.6	11.4
4SAm4/16	4SA4/16		727	1236	1244	5.2	16.4	13.8
-	4SA4/22		901	-	1491	6.7	-	17.2
-	4SA4/28		1110	-	1755	8.3	-	19.8
-	4SA4/35	1314	-	2034	9.9	-	23.0	

Model		Pipe Connection (DN)	Dim. (mm)			N.W.(kg)		
Single-phase	Three-phase		B	A Single-Phase	Three-phase	Body(kg)	Motor(kg)	
						Single-phase	Three-phase	
4SAm6/3	-	G1½ NPT1½	286	630	-	2.2	8.7	-
4SAm6/4	4SA6/4		318	687	735	2.5	9.8	9.7
4SAm6/6	4SA6/6		384	788	836	3.0	11.5	10.8
4SAm6/8	4SA6/8		450	899	912	3.5	13.6	11.4
4SAm6/12	4SA6/12		616	1125	1133	4.5	16.4	13.8
-	4SA6/16		749	-	1339	5.5	-	17.2
-	4SA6/21		947	-	1592	6.7	-	19.8
-	4SA6/27		1144	-	1864	8.1	-	23.0
-	4SA6/35	1442	-	2262	10.3	-	29.3	

Model		Pipe Connection (DN)	Dim. (mm)			N.W.(kg)		
Single-phase	Three-phase		B	A Single-Phase	Three-phase	Body(kg)	Motor(kg)	
							Single-phase	Three-phase
4SAm8/3	4SA8/3	G2 NPT2	311	680	670	2.4	9.8	9.5
4SAm8/5	4SA8/5		387	791	781	3.1	11.2	11.1
4SAm8/7	4SA8/7		463	912	867	3.7	11.5	11.5
4SAm8/10	4SA8/10		613	1122	1083	4.5	16.0	14.5
-	4SA8/13		727	-	1259	5.3	-	17.5
-	4SA8/17		914	-	1501	6.6	-	19.5
-	4SA8/22		1104	-	1672	7.9	-	23.0
-	4SA8/28		1367	-	2035	10.1	-	30.0

Model		Pipe Connection (DN)	Dim. (mm)			N.W.(kg)		
Single-phase	Three-phase		B	A Single-Phase	Three-phase	Body(kg)	Motor(kg)	
							Single-phase	Three-phase
4SAm10/4	4SA10/4	G2 NPT2	349	753	742	2.8	11.2	11.1
4SAm10/6	4SA10/6		425	874	840	3.3	11.5	11.5
4SAm10/8	4SA10/8		536	1045	1006	3.8	16.0	14.5
-	4SA10/10		613	-	1141	4.4	-	17.5
-	4SA10/13		727	-	1314	5.3	-	19.5
-	4SA10/17		914	-	1576	6.5	-	23.0
-	4SA10/22		1104	-	1866	8.0	-	30.0

Model		Pipe Connection (DN)	Dim. (mm)			N.W.(kg)		
Single-phase	Three-phase		B	A Single-Phase	Three-phase	Body(kg)	Motor(kg)	
							Single-phase	Three-phase
4SAm12/5	4SA12/5	G2 NPT2	487	936	949	4.0	11.5	11.5
4SAm12/7	4SA12/7		584	1093	1101	4.9	16.0	14.5
-	4SA12/9		681	-	1271	5.8	-	17.5
-	4SA12/12		884	-	1529	7.1	-	19.5
-	4SA12/16		1078	-	1798	8.8	-	23.0
-	4SA12/20		1329	-	2149	10.9	-	30.0

Model		Pipe Connection (DN)	Dim. (mm)			N.W.(kg)		
Single-phase	Three-phase		B	A Single-Phase	Three-phase	Body(kg)	Motor(kg)	
							Single-phase	Three-phase
4SAm16/3	4SA16/3	G2 NPT2	475	924	890	3.5	11.5	11.5
4SAm16/5	4SA16/5		626	1135	1096	4.7	16.0	14.5
-	4SA16/7		778	-	1310	5.8	-	17.5
-	4SA16/9		930	-	1517	6.7	-	19.5
-	4SA16/12		1157	-	1819	8.2	-	23.0
-	4SA16/15		1384	-	2146	9.7	-	30.0



## Packing Size & Weight

Model		Dim. (mm)					G.W.(kg)		20*Loading Qty.(pcs)	
Single-phase	Three-phase	Motor(L×W×H)		Body (L×W×H)	Pump(L×W×H)		Single-phase	Three-phase	Single-phase	Three-phase
		Single-phase	Three-phase		Single-phase	Three-phase				
4SAm2/5	-	-	-	-	955x110x185	-	11.8	-	1390	-
4SAm2/7	-	-	-	-	1020x110x185	-	13.2	-	1300	-
4SAm2/9	4SA2/9	-	-	-	955x125x125	955x125x125	14.7	14.6	1200	1500
4SAm2/13	4SA2/13	-	-	-	1075x125x125	1075x125x125	17.3	16.6	1080	1300
4SAm2/17	4SA2/17	-	-	-	1255x125x125	1255x125x125	20.1	17.9	960	1150
4SAm2/24	4SA2/24	-	-	-	1500x125x125	1500x125x125	24.3	21.2	770	920
-	4SA2/32	-	780x125x125	1180x125x125	-	-	-	M:18.7 B:9.7	-	910
-	4SA2/40	-	780x125x125	1415x125x125	-	-	-	M:21.3 B:10.9	-	780

Model		Dim. (mm)					G.W.(kg)		20*Loading Qty.(pcs)	
Single-phase	Three-phase	Motor(L×W×H)		Body (L×W×H)	Pump(L×W×H)		Single-phase	Three-phase	Single-phase	Three-phase
		Single-phase	Three-phase		Single-phase	Three-phase				
4SAm3/3	-	-	-	-	890x110x185	-	11.3	-	1570	-
4SAm3/5	-	-	-	-	980x110x185	-	12.8	-	1350	-
4SAm3/7	4SA3/7	-	-	-	890x125x125	850x125x125	14.3	14.2	1230	1570
4SAm3/9	4SA3/9	-	-	-	980x125x125	980x125x125	16.4	15.7	1170	1420
4SAm3/12	4SA3/12	-	-	-	1075x125x125	1075x125x125	19.1	16.8	1050	1300
4SAm3/18	4SA3/18	-	-	-	1310x125x125	1310x125x125	23.2	20.6	870	1050
-	4SA3/24	-	780x125x125	980x125x125	-	-	-	M:18.7 B:8.2	-	1020
-	4SA3/32	-	780x125x125	1210x125x125	-	-	-	M:21.3 B:10	-	870
-	4SA3/40	-	870x125x125	1460x125x125	-	-	-	M:24.5 B:12	-	730

Model		Dim. (mm)					G.W.(kg)		20*Loading Qty.(pcs)	
Single-phase	Three-phase	Motor(L×W×H)		Body (L×W×H)	Pump(L×W×H)		Single-phase	Three-phase	Single-phase	Three-phase
		Single-phase	Three-phase		Single-phase	Three-phase				
4SAm4/3	-	-	-	-	935x110x185	-	11.4	-	1420	-
4SAm4/4	-	-	-	-	980x110x185	-	12.7	-	1350	-
4SAm4/6	4SA4/6	-	-	-	850x125x125	850x125x125	14.3	14.2	1300	1570
4SAm4/8	4SA4/8	-	-	-	935x125x125	935x125x125	16.4	16	1170	1420
4SAm4/11	4SA4/11	-	-	-	1020x125x125	1020x125x125	19.1	16.9	1050	1300
4SAm4/16	4SA4/16	-	-	-	1360x125x125	1360x125x125	23.1	20.5	840	960
-	4SA4/22	-	780x125x125	1020x125x125	-	-	-	M:18.7 B:8.2	-	1000
-	4SA4/28	-	780x125x125	1210x125x125	-	-	-	M:21.3 B:9.8	-	880
-	4SA4/35	-	870x125x125	1415x125x125	-	-	-	M:24.5 B:11.4	-	750

Model		Dim. (mm)					G.W.(kg)		20*Loading Qty.(pcs)	
Single-phase	Three-phase	Motor(L×W×H)		Body (L×W×H)	Pump(L×W×H)		Single-phase	Three-phase	Single-phase	Three-phase
		Single-phase	Three-phase		Single-phase	Three-phase				
4SAm6/3	-	-	-	-	935x110x185	-	12.4	-	1420	-
4SAm6/4	4SA6/4	-	-	-	850x125x125	850x125x125	13.8	13.7	1350	1650
4SAm6/6	4SA6/6	-	-	-	935x125x125	935x125x125	16.0	15.3	1230	1500
4SAm6/8	4SA6/8	-	-	-	1020x125x125	1020x125x125	18.6	16.4	1100	1350
4SAm6/12	4SA6/12	-	-	-	1255x125x125	1255x125x125	22.4	19.8	920	1100
-	4SA6/16	-	780x125x125	850x125x125	-	-	-	M:18.7 B:7	-	1150
-	4SA6/21	-	780x125x125	1075x125x125	-	-	-	M:21.3 B:8.2	-	970
-	4SA6/27	-	870x125x125	1255x125x125	-	-	-	M:24.5 B:9.6	-	830
-	4SA6/35	-	1015x125x125	1520x125x125	-	-	-	M:30.8 B:11.8	-	700

Model		Dim. (mm)					G.W.(kg)		20"Loading Qty.(pcs)	
Single-phase	Three-phase	Motor(L×W×H)		Body (L×W×H)	Pump(L×W×H)		Single-phase	Three-phase	Single-phase	Three-phase
		Single-phase	Three-phase		Single-phase	Three-phase				
4SAm8/3	4SA8/3	-	-	-	980x110x185	850x125x125	13.7	13.5	1350	1710
4SAm8/5	4SA8/5	-	-	-	1100x110x185	955x125x125	16.1	15.4	1200	1500
4SAm8/7	4SA8/7	-	-	-	1255x110x185	1020x125x125	19.0	16.6	1050	1350
4SAm8/10	4SA8/10	-	-	-	1415x110x185	1310x125x125	23.0	20	920	1120
-	4SA8/13	-	690x125x125	850x125x125	-	-	-	M:18.7 B:6.8	-	1110
-	4SA8/17	-	740x125x125	1020x125x125	-	-	-	M:21.3 B:8.1	-	970
-	4SA8/22	-	825x125x125	1210x125x125	-	-	-	M:24.5 B:9.4	-	830
-	4SA8/28	-	1015x125x125	1460x125x125	-	-	-	M:32.0 B:11.5	-	700

Model		Dim. (mm)					G.W.(kg)		20"Loading Qty.(pcs)	
Single-phase	Three-phase	Motor(L×W×H)		Body (L×W×H)	Pump(L×W×H)		Single-phase	Three-phase	Single-phase	Three-phase
		Single-phase	Three-phase		Single-phase	Three-phase				
4SAm10/4	4SA10/4	-	-	-	1075x110x185	890x125x125	15.8	15.1	1230	1570
4SAm10/6	4SA10/6	-	-	-	1180x110x185	980x125x125	18.4	16.2	1120	1420
4SAm10/8	4SA10/8	-	-	-	1360x110x185	1180x125x125	21.7	19.9	960	1170
-	4SA10/10	-	780x125x125	730x125x125	-	-	-	M:18.7 B:5.9	-	1210
-	4SA10/13	-	780x125x125	810x125x125	-	-	-	M:21.3 B:6.8	-	1100
-	4SA10/17	-	870x125x125	1020x125x125	-	-	-	M:25.0 B:7.5	-	920
-	4SA10/22	-	1015x125x125	1210x125x125	-	-	-	M:32.0 B:9.0	-	790

Model		Dim. (mm)					G.W.(kg)		20"Loading Qty.(pcs)	
Single-phase	Three-phase	Motor(L×W×H)		Body (L×W×H)	Pump(L×W×H)		Single-phase	Three-phase	Single-phase	Three-phase
		Single-phase	Three-phase		Single-phase	Three-phase				
4SAm12/5	4SA12/5	-	-	-	1255x110x185	1075x125x125	19.1	16.9	1050	1300
4SAm12/7	4SA12/7	-	-	-	1415x110x185	1180x125x125	22.8	20.2	920	1120
-	4SA12/9	-	780x125x125	810x125x125	-	-	-	M:18.7 B:7.3	-	1150
-	4SA12/12	-	780x125x125	980x125x125	-	-	-	M:21.3 B:8.6	-	990
-	4SA12/16	-	870x125x125	1180x125x125	-	-	-	M:24.5 B:10.3	-	840
-	4SA12/20	-	1015x125x225	1460x125x125	-	-	-	M:32.0 B:12.4	-	700

Model		Dim. (mm)					G.W.(kg)		20"Loading Qty.(pcs)	
Single-phase	Three-phase	Motor(L×W×H)		Body (L×W×H)	Pump(L×W×H)		Single-phase	Three-phase	Single-phase	Three-phase
		Single-phase	Three-phase		Single-phase	Three-phase				
4SAm16/3	4SA16/3	-	-	-	1310x110x185	1020x125x125	17.6	16.4	1000	1300
4SAm16/5	4SA16/5	-	-	-	1415x110x185	1310x125x125	22.6	20	920	1050
-	4SA16/7	-	780x125x125	890*125*125	-	-	-	M:18.7 B:7.3	-	1080
-	4SA16/9	-	780x125x125	1020*125*125	-	-	-	M:21.3 B:8.2	-	970
-	4SA16/12	-	870x125x125	1255*125*125	-	-	-	M:24.5 B:9.7	-	810
-	4SA16/15	-	1015x125x225	1500*125*125	-	-	-	M:32.0 B:11.0	-	690

NOTE: Motor packaged without submersible drop cable, package dimensions enlarged if necessary.