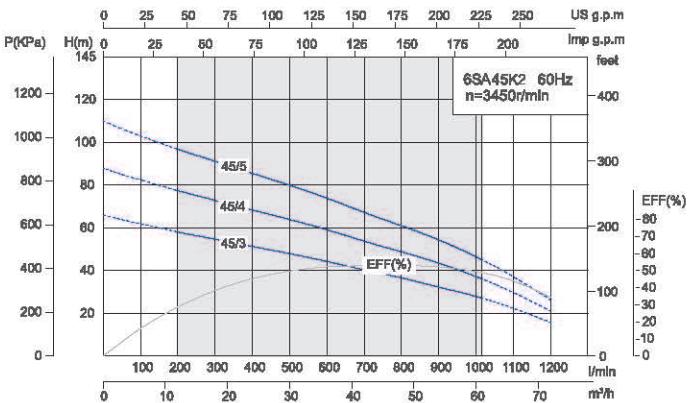
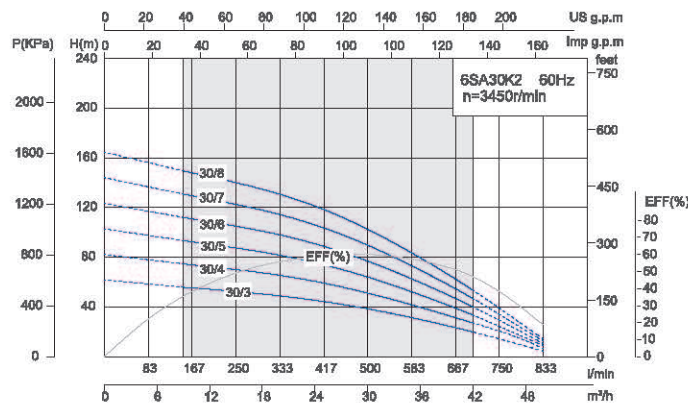
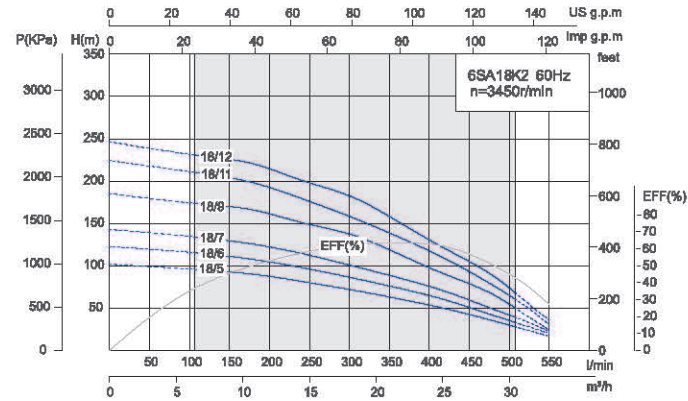
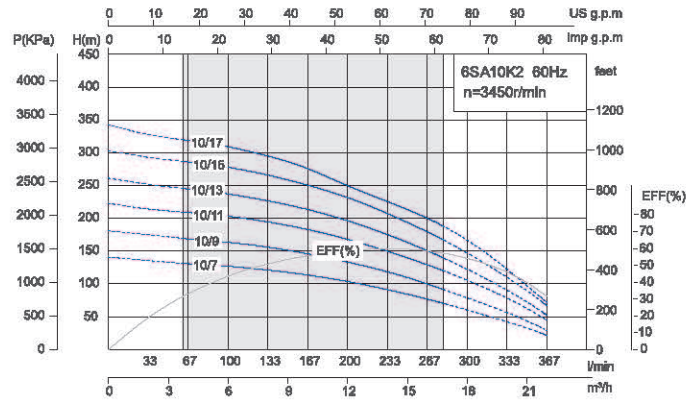


**Performance Curve**



Model	Power		Current (A)	Flow													Head Range (m)
	Three-Phase			Three-Phase	m <sup>3</sup> /h	0	2	4	6	8	10	12	14	16	18	20	
	kW	HP	220V/380V			l/min	0	33	67	100	133	167	200	233	267	300	
6SA 10/7T	5.5	7.5	22.5/13	H(m)	141	135	131	127	121	114	104	90	77	60	42	21	132~69
6SA 10/9T	7.5	10	31.2/18		181	174	169	164	156	146	133	118	100	79	56	29	170~91
6SA 10/11T	9.2	12.5	36.4/21		225	214	209	203	195	183	168	150	129	106	78	45	210~119
6SA 10/13T	11	15	41.6/24		261	251	245	237	225	213	196	175	150	122	91	52	246~138
6SA 10/15T	13	17.5	45/26		300	293	286	278	266	250	232	207	179	147	110	67	287~166
6SA 10/17T	15	20	48.5/28		343	328	319	309	295	276	250	225	200	167	122	72	321~186

Model	Power		Current (A)	Flow													Head Range (m)
	Three-Phase			Three-Phase	m <sup>3</sup> /h	0	3	6	9	12	15	18	21	24	27	30	
	kW	HP	220V/380V			l/min	0	50	100	150	200	250	300	350	400	450	
6SA 18/5T	5.5	7.5	22.5/13	H(m)	102	99	96	93	88	80	72	63	53	42	30	17	96~28
6SA 18/6T	7.5	10	31.2/18		123	120	116	111	105	96	86	76	65	51	35	20	115~33
6SA 18/7T	9.2	12.5	36.4/21		143	139	135	130	122	112	101	89	76	59	42	22	134~39
6SA 18/9T	11	15	41.6/24		185	180	174	170	161	149	137	119	98	79	55	24	174~50
6SA 18/11T	13	17.5	45/26		224	218	211	204	193	176	158	139	130	93	65	30	210~61
6SA 18/12T	15	20	48.5/28		247	239	232	226	215	198	183	158	130	105	74	36	231~68

Model	Power		Current (A)	Flow												Head Range (m)
	Three-Phase			Three-Phase	m <sup>3</sup> /h	0	5	10	15	20	25	30	35	40	45	
	kW	HP	220V/380V			l/min	0	83	167	250	333	417	500	583	667	
6SA 30/3T	5.5	7.5	22.5/13	H(m)	62	58	55	53	49	44	39	31	23	14	4	56~19
6SA 30/4T	7.5	10	31.2/18		82	78	74	70	66	59	51	42	31	21	6	75~27
6SA 30/5T	9.2	12.5	36.4/21		103	98	93	88	82	74	65	52	39	24	9	94~33
6SA 30/6T	11	15	41.6/24		124	117	111	105	98	89	77	63	47	29	11	112~39
6SA 30/7T	13	17.5	45/26		144	137	130	123	114	104	90	73	55	34	13	131~46
6SA 30/8T	15	20	48.5/28		165	156	148	140	131	118	103	84	62	39	14	150~52

Model	Power		Current (A)	Flow													Head Range (m)	
	Three-Phase			Three-Phase	m <sup>3</sup> /h	0	6	12	18	24	30	36	42	48	54	60		66
	kW	HP	220V/380V			l/min	0	100	200	300	400	500	600	700	800	900		1000
6SA 45/3T	7.5	10	31.2/18	H(m)	66	62	58	55	51	48	44	40	37	32	28	22	16	58~27
6SA 45/4T	11	15	41.6/24		88	82	77	73	68	64	59	54	49	43	37	30	21	77~36
6SA 45/5T	15	20	48.5/28		110	103	97	91	86	80	74	67	61	54	47	37	26	96~45

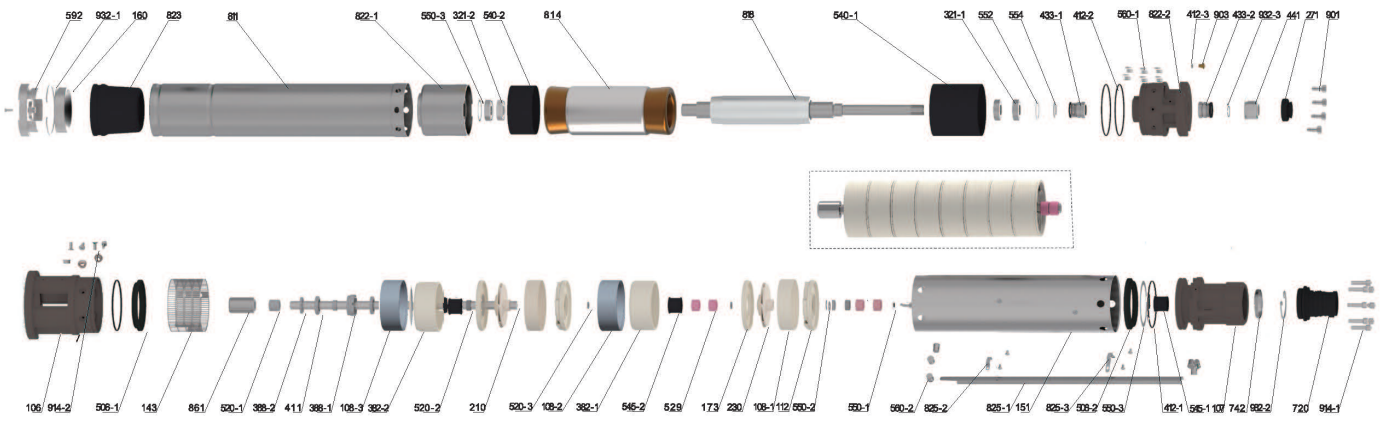
Model	Power		Current (A)	Flow													Head Range (m)
	Three-Phase			m <sup>3</sup> /h	0	2	4	6	8	10	12	14	16	18	20	22	
	kW	HP	220V/380V/440V		l/min	0	33	67	100	133	167	200	233	267	300	333	
6SA10/7-K2	5.5	7.5	22.5/13/9.89	H(m)	141	135	131	127	121	114	104	90	77	60	42	21	132~69
6SA10/9-K2	7.5	10	31.2/18/12.92		181	174	169	164	156	146	133	118	100	79	56	29	170~91
6SA10/11-K2	9.2	12.5	36.4/21/16.53		225	214	209	203	195	183	168	150	129	106	78	45	210~119
6SA10/13-K2	11	15	41.6/24/21.7		261	251	245	237	225	213	196	175	150	122	91	52	246~138
6SA10/15-K2	13	17.5	/26/25		300	293	286	278	266	250	232	207	179	147	110	67	287~166
6SA10/17-K2	15	20	/28/28.3		343	328	319	309	295	276	250	225	200	167	122	72	321~186

Model	Power		Current (A)	Flow													Head Range (m)
	Three-Phase			m <sup>3</sup> /h	0	3	6	9	12	15	18	21	24	27	30	33	
	kW	HP	220V/380V/440V		l/min	0	50	100	150	200	250	300	350	400	450	500	
6SA18/5-K2	5.5	7.5	22.5/13/9.89	H(m)	102	99	96	93	88	80	72	63	53	42	30	17	96~28
6SA18/6-K2	7.5	10	31.2/18/12.92		123	120	116	111	105	96	86	76	65	51	35	20	115~33
6SA18/7-K2	9.2	12.5	36.4/21/16.53		143	139	135	130	122	112	101	89	76	59	42	22	134~39
6SA18/9-K2	11	15	41.6/24/21.7		185	180	174	170	161	149	137	119	98	79	55	24	174~50
6SA18/11-K2	13	17.5	/26/25		224	218	211	204	193	176	158	139	130	93	65	30	210~61
6SA18/12-K2	15	20	/28/28.3		247	239	232	226	215	198	183	158	130	105	74	36	231~68

Model	Power		Current (A)	Flow												Head Range (m)
	Three-Phase			m <sup>3</sup> /h	0	5	10	15	20	25	30	35	40	45	50	
	kW	HP	220V/380V/440V		l/min	0	83	167	250	333	417	500	583	667	750	
6SA30/3-K2	5.5	7.5	22.5/13/9.89	H(m)	62	58	55	53	49	44	39	31	23	14	4	56~19
6SA30/4-K2	7.5	10	31.2/18/12.92		82	78	74	70	66	59	51	42	31	21	6	75~27
6SA30/5-K2	9.2	12.5	36.4/21/16.53		103	98	93	88	82	74	65	52	39	24	9	94~33
6SA30/6-K2	11	15	41.6/24/21.7		124	117	111	105	98	89	77	63	47	29	11	112~39
6SA30/7-K2	13	17.5	/26/25		144	137	130	123	114	104	90	73	55	34	13	131~46
6SA30/8-K2	15	20	/28/28.3		165	156	148	140	131	118	103	84	62	39	14	150~52

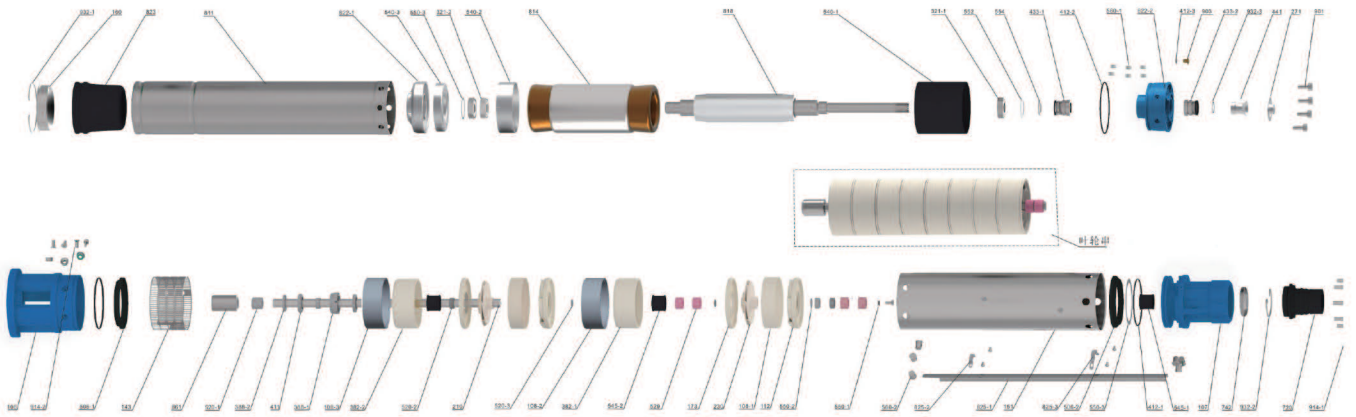
Model	Power		Current (A)	Flow													Head Range (m)	
	Three-Phase			m <sup>3</sup> /h	0	6	12	18	24	30	36	42	48	54	60	66		72
	kW	HP	220V/380V/440V		l/min	0	100	200	300	400	500	600	700	800	900	1000		1100
6SA45/3-K2	7.5	10	31.2/18/12.92	H(m)	66	62	58	55	51	48	44	40	37	32	28	22	16	58~27
6SA45/4-K2	11	15	41.6/24/21.7		88	82	77	73	68	64	59	54	49	43	37	30	21	77~36
6SA45/5-K2	15	20	/28/28.3		110	103	97	91	86	80	74	67	61	54	47	37	26	96~45

**Components & Materials**



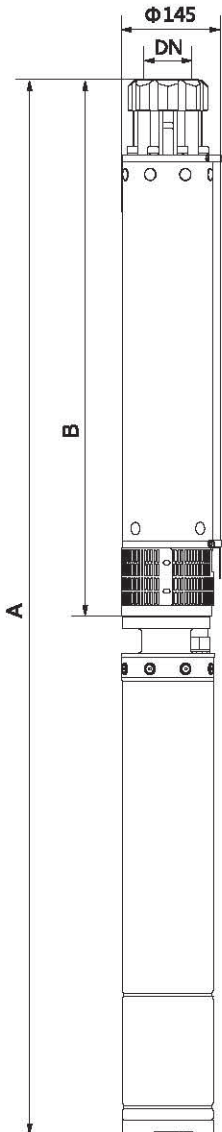
**6SA-T**

**Components & Materials**



**6SA-K2**

## Dimensions & Weight



Model	Pipe Connection (DN)	Dim. (mm)		N.W.(kg)	
		B	A Three-phase	Body(kg)	Motor(kg) M(Single-phase)
6SA 10/7T	G3/NPT3	668	1470	15.8	39.6
6SA 10/9T		745	1607	17.3	44.8
6SA 10/11T		885	1812	19.4	51.4
6SA 10/13T		962	1959	20.7	58
6SA 10/15T		1040	2097	23.1	63.8
6SA 10/17T		1118	2215	26.6	67.4

Model	Pipe Connection (DN)	Dim. (mm)		N.W.(kg)	
		B	A Three-phase	Body(kg)	Motor(kg) M(Single-phase)
6SA 18/5T	G3/NPT3	629	1431	15.5	39.6
6SA 18/6T		862	1538	16	44.8
6SA 18/7T		722	1649	16.6	51.4
6SA 18/9T		815	1812	18.4	58
6SA 18/11T		909	1966	20.5	63.8
6SA 18/12T		955	2052	21.3	67.4

Model	Pipe Connection (DN)	Dim. (mm)		N.W.(kg)	
		B	A Three-phase	Body(kg)	Motor(kg) M(Single-phase)
6SA 30/3	G3/NPT3	557	1359	13.1	39.6
6SA 30/4T		611	1473	13.8	44.8
6SA 30/5T		665	1592	14.9	51.4
6SA 30/6T		719	1716	15.8	58
6SA 30/7T		773	1830	16.7	63.8
6SA 30/8T		826	1923	17.3	67.4

Model	Pipe Connection (DN)	Dim. (mm)		N.W.(kg)	
		B	A Three-phase	Body(kg)	Motor(kg) M(Single-phase)
6SA 45/3T	G3/NPT3	596	1458	14	44.8
6SA 45/4T		663	1660	15.7	58
6SA 45/5T		730	1827	16.3	67.4

## Dimensions & Weight



Model	Pipe Connection (DN)	Dim. (mm)		N.W. (kg)	
Three-phase		B	A Three-phase	Body(kg)	Motor(kg) M(Single-phase)
6SA10/7-K2	G3	668	1262	15.8	31
6SA10/9-K2		745	1399	17.3	37
6SA10/11-K2		885	1599	19.4	42
6SA10/13-K2		962	1746	20.7	50
6SA10/15-K2		1040	1884	23.1	56
6SA10/17-K2		1118	2002	26.6	60
6SA18/5-K2		630	1224	15.5	31
6SA18/6-K2		677	1331	16	37
6SA18/7-K2		724	1438	16.6	42
6SA18/9-K2		817	1601	21	50
6SA18/11-K2		911	1755	21.5	56
6SA18/12-K2		958	1842	21.3	60
6SA30/3-K2		557	1151	24	31
6SA30/4-K2		611	1265	13.8	37
6SA30/5-K2		665	1379	14.9	42
6SA30/6-K2		719	1503	15.8	50
6SA30/7-K2		773	1617	20	56
6SA30/8-K2		888	1772	17.3	60
6SA45/3-K2		596	1250	14	37
6SA45/4-K2		663	1447	15.7	50
6SA45/5-K2	730	1614	16	60	

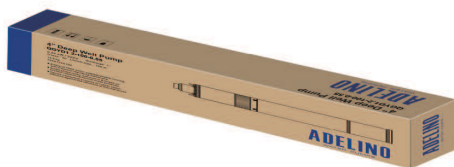
## Packing Size & Weight

Model	Dim. (mm)		G. W. (kg)	20"LoadinE Qty.(pcs)
	Motor(L×W×H)	Body(L×W×H)		
	Three-phase			
6SA 10/7T	940×150×150	800×150×150	65.4	470
6SA 10/9T	1000×150×150	880×150×150	72.1	430
6SA 10/11T	1060×150×150	1020×150×150	80.8	390
6SA 10/13T	1130×150×150	1090×150×150	88.7	360
6SA 10/15T	1190×150×150	1170×150×150	96.9	340
6SA 10/17T	1230×150×150	1250×150×150	106	320

Model	Dim. (mm)		G. W. (kg)	20"LoadinE Qty.(pcs)
	Motor(L×W×H)	Body(L×W×H)		
	Three-phase			
6SA 18/5T	940×150×150	760×150×150	65.1	480
6SA 18/6T	1000×150×150	800×150×150	70.8	450
6SA 18/7T	1060×150×150	860×150×150	78	420
6SA 18/9T	1130×150×150	950×150×150	86.4	390
6SA 18/11T	1190×150×150	960×150×150	94.3	360
6SA 18/12T	1230×150×150	1090×150×150	99.7	350

Model	Dim. (mm)		G. W. (kg)	20"LoadinE Qty.(pcs)
	Motor(L×W×H)	Body(L×W×H)		
	Three-phase			
6SA 30/3T	940×150×150	690×150×150	62.7	510
6SA 30/4T	1000×150×150	740×150×150	68.6	470
6SA 30/5T	1060×150×150	800×150×150	76.3	440
6SA 30/6T	1130×150×150	860×150×150	83.8	410
6SA 30/7T	1190×150×150	910×150×150	90.5	390
6SA 30/8T	1230×150×150	970×150×150	95.7	370

Model	Dim. (mm)		G. W. (kg)	20"LoadinE Qty.(pcs)
	Motor(L×W×H)	Body(L×W×H)		
	Three-phase			
6SA 45/3T	1000×150×150	645×150×150	68.8	480
6SA 45/4T	1130×150×150	715×150×150	83.7	420
6SA 45/5T	1230×150×150	780×150×150	94.7	390





## Packing Size & Weight

Model	Dim. (mm)		G.W.(kg)	20"LoadinE Qty.(pcs)
	Motor(LxWxH)	Body(LxWxH)		
	Three-phase			
6SA10/7-K2	760x150x150	800x150x150	50.0	797
6SA10/9-K2	820x150x150	880x150x150	58.0	732
6SA10/11-K2	880x150x150	1020x150x150	65.0	654
6SA10/13-K2	880x150x150	1090x150x150	75.0	631
6SA10/15-K2	1000x150x150	1170x150x150	84.0	573
6SA10/17-K2	1050x150x150	1250x150x150	92.0	541
6SA18/5-K2	760x150x150	760x150x150	50.0	818
6SA18/6-K2	820x150x150	1000x150x150	56.0	683
6SA18/7-K2	880x150x150	860x150x150	62.0	715
6SA18/9-K2	880x150x150	950x150x150	73.0	680
6SA18/11-K2	1000x150x150	1040x150x150	81.0	610
6SA18/12-K2	1050x150x150	1090x150x150	86.0	581
6SA30/3-K2	760x150x150	690x150x150	47.0	858
6SA30/4-K2	820x150x150	740x150x150	54.0	797
6SA30/5-K2	880x150x150	800x150x150	60.0	740
6SA30/6-K2	880x150x150	860x150x150	70.0	715
6SA30/7-K2	1000x150x150	910x150x150	77.0	651
6SA30/8-K2	1050x150x150	970x150x150	82.0	616
6SA45/3-K2	820x150x150	740x150x150	54.0	797
6SA45/4-K2	880x150x150	800x150x150	70.0	740
6SA45/5-K2	1050x150x150	860x150x150	81.0	651

