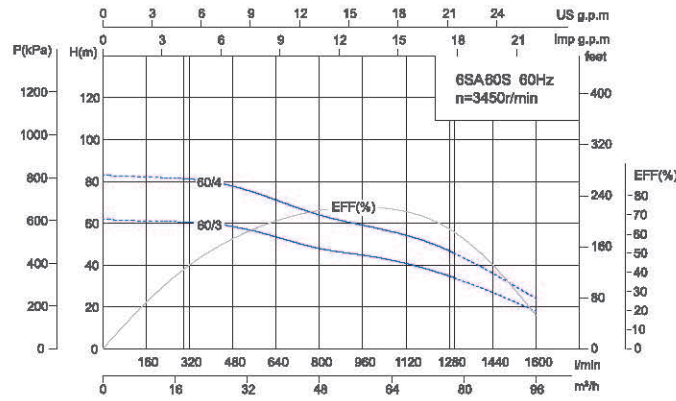
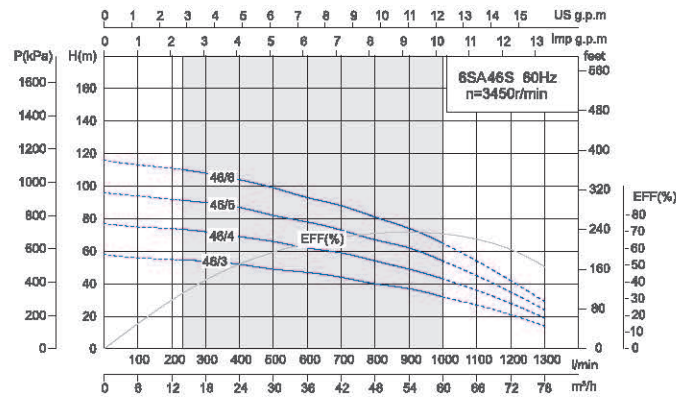
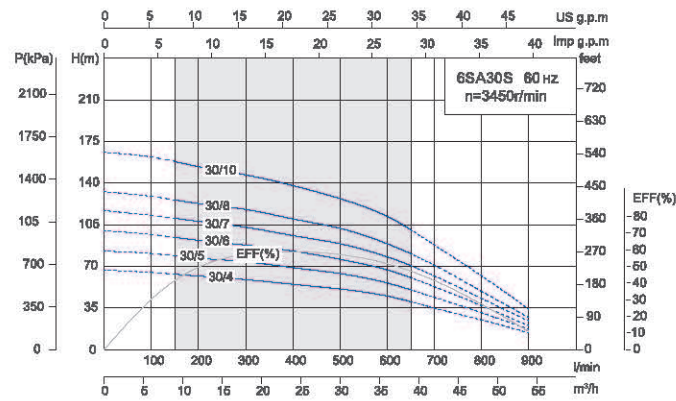
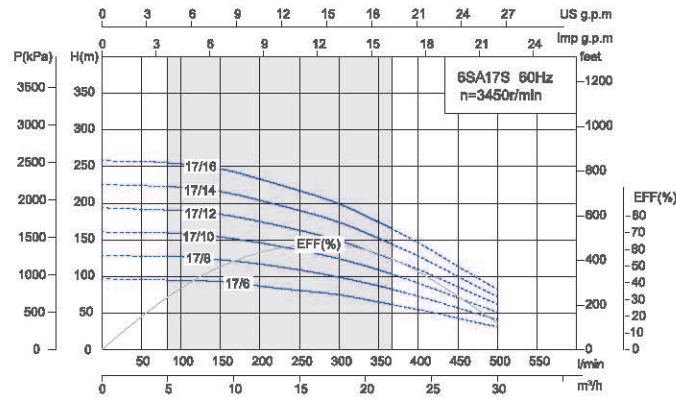


**Performance Curve**



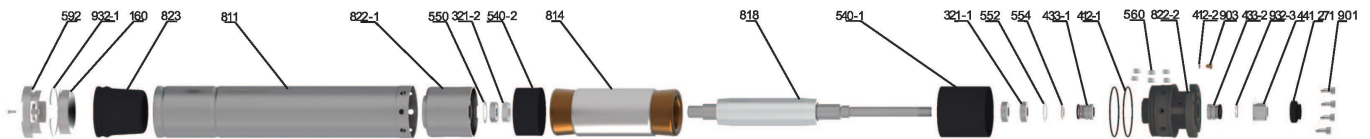
Model	Power		Current (A)		Flow												Head Range (m)	
	Three-Phase	kW	HP	Three-Phase	m <sup>3</sup> /h	0	3	6	9	12	15	18	21	24	27	30		33
				220V/380V	l/min	0	50	100	150	200	250	300	350	400	450	500		550
6SA 18/5S	5.5	7.5	22.5/13	H(m)	102	99	96	93	88	80	72	63	53	42	30	17	96~28	
6SA 18/6S	7.5	10	31.2/18		123	120	116	111	105	96	86	76	65	51	35	20	115~33	
6SA 18/7S	9.2	12.5	36.4/21		143	139	135	130	122	112	101	89	76	59	42	22	134~39	
6SA 18/9S	11	15	41.6/24		185	180	174	170	161	149	137	119	98	79	55	24	174~50	
6SA 18/11S	13	17.5	45/26		224	218	211	204	193	176	158	139	130	93	65	30	210~61	
6SA 18/12S	15	20	48.5/28		247	239	232	226	215	198	183	158	130	105	74	36	231~68	

Model	Power		Current (A)		Flow										Head Range (m)	
	Three-Phase	kW	HP	Three-Phase	m <sup>3</sup> /h	0	6	12	18	24	30	36	42	48		54
				220V/380V	l/min	0	100	200	300	400	500	600	700	800		900
6SA30/4S	5.5	7.5	23/13	H(m)	67	65	62	59	55	51	45	35	25	14	63~40	
6SA30/5S	7.5	10	31/18		83	81	77	74	69	64	56	44	31	17	79~50	
6SA30/6S	9.2	12.5	40/23		100	97	92	88	83	76	67	53	37	20	95~60	
6SA30/7S	11	15	45/26		117	113	108	103	96	89	78	62	43	24	110~70	
6SA30/8S	13	17.5	57/33		133	129	123	118	110	102	89	71	49	27	126~80	
6SA30/10S	15	20	60/35		166	162	154	147	138	127	112	88	62	34	158~100	

Model	Power		Current (A)		Flow													Head Range (m)		
	Three-Phase	kW	HP	Three-Phase	m <sup>3</sup> /h	0	6	12	18	24	30	36	42	48	54	60	66		72	78
				220V/380V	l/min	0	100	200	300	400	500	600	700	800	900	1000	1100		1200	1300
6SA46/3S	7.5	10	31/18	H(m)	58	56	55	54	52	49	47	44	40	37	32	27	21	14	63~40	
6SA46/4S	11	15	45/26		77	75	74	72	69	66	62	59	54	49	43	36	28	19	79~50	
6SA46/5S	13	18	57/33		96	94	92	90	87	82	78	73	67	62	54	45	35	24	95~60	
6SA46/6S	15	20	60/35		116	113	111	108	104	99	93	88	81	74	65	54	42	29	110~70	

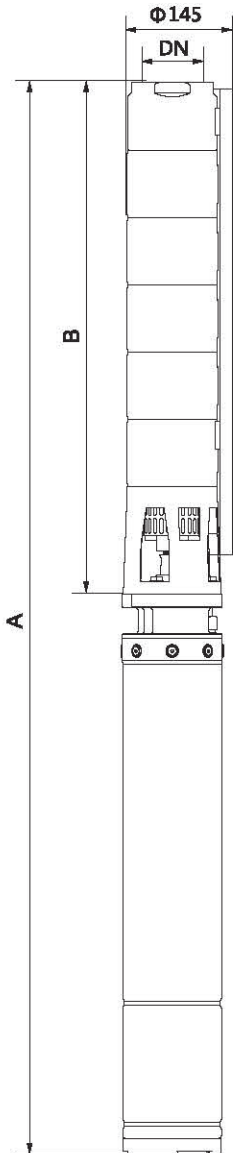
Model	Power		Current (A)		Flow									Head Range (m)	
	Three-Phase	kW	HP	Three-Phase	m <sup>3</sup> /h	0	12	24	36	48	60	72	84		96
				220V/380V	l/min	0	200	400	600	800	1000	1200	1400		1600
6SA60/3S	11	15	45/26	H(m)	62	61	60	55	48	44	38	29	18	61~34	
6SA60/4S	15	20	60/35		83	82	80	73	64	58	51	39	24	81~45	

## Components & Materials



No.	Part name	No.	Part name
160	Inlet joint	560	Locating sleeve
271	Sand shaking sleeve	592	Base
321-1	Deep groove ball bearing	811	Casing
321-2	Angular contact ball bearing	814	Stator core with winding
412-1	O-ring	818	Rotor
412-2	O-ring	822-1	Lower bearing block
433-1	Mechanical seal	822-2	Oil chamber
433-2	Mechanical seal	823	Pressure regulating film
441	Stainless steel sleeve	901	Outer hexagon flat screw
540-1	Upper spacer sleeve	903	Vent cock
540-2	Lower spacer sleeve	932-1	Retaining ring
550	Pump shaft gasket	932-2	Circlip for shaft
552	Wave spring		
554	Flat washer		

## Dimensions & Weight



Model	Pipe Connection (DN)	Dim. (mm)		N.W.(kg)	
		B	A Three-phase	Body(kg)	Motor(kg) M(Single-phase)
6SA17/6S	G3/NPT3	538	1438	11.3	40
6SA17/8S		630	1624	13.9	45
6SA17/10S		722	1806	16.5	50
6SA17/12S		814	1997	19.1	58
6SA17/14S		906	2177	21.7	64
6SA17/16S		998	2337	24.3	67

Model	Pipe Connection (DN)	Dim. (mm)		N.W.(kg)	
		B	A Three-phase	Body(kg)	Motor(kg) M(Single-phase)
6SA30/4S	G3/NPT3	622	1457	10.7	40
6SA30/5S		712	1618	12.5	45
6SA30/6S		802	1774	14.3	50
6SA30/7S		892	1940	16.1	58
6SA30/8S		982	2094	17.9	64
6SA30/10S		1162	2325	21.5	67

Model	Pipe Connection (DN)	Dim. (mm)		N.W.(kg)	
		B	A Three-phase	Body(kg)	Motor(kg) M(Single-phase)
6SA46/3S	G3/NPT3	598	1477	11	45
6SA46/4S		710	1720	13.5	58
6SA46/5S		822	1891	16	64
6SA46/6S		934	2043	18.5	67

Model	Pipe Connection (DN)	Dim. (mm)		N.W.(kg)	
		B	A Three-phase	Body(kg)	Motor(kg) M(Single-phase)
6SA60/3S	G3/NPT3	598	1607	11	58
6SA60/4S		710	1817	13.5	67

## Packing Size & Weight

Model	Dim. (mm)		G.W.(kg)	20"LoadInE Qty.(pcs)
	Motor(L×W×H)	Body(L×W×H)		
6SA17/6S	940×150×150	640×150×150	M:40 B:11	470
6SA17/8S	1000×150×150	740×150×150	M:45 B:13	430
6SA17/10S	1060×150×150	880×150×150	M:50 B:15	370
6SA17/12S	1130×150×150	910×150×150	M:58 B:17.5	340
6SA17/14S	1190×150×150	1070×150×150	M:64 B:22	310
6SA17/16S	1230×150×150	1090×150×150	M:67 B:25	280

Model	Dim. (mm)		G.W.(kg)	20"LoadInE Qty.(pcs)
	Motor(L×W×H)	Body(L×W×H)		
6SA30/4S	940×150×150	740×150×150	M:40 B:15.5	470
6SA30/5S	1000×150×150	820×150×150	M:45 B:17.5	430
6SA30/6S	1060×150×150	880×150×150	M:50 B:19	380
6SA30/7S	1130×150×150	1000×150×150	M:58 B:21	350
6SA30/8S	1190×150×150	1070×150×150	M:64 B:23	320
6SA30/10S	1230×150×150	1270×170×210	M:67 B:26.5	280

Model	Dim. (mm)		G.W.(kg)	20"LoadInE Qty.(pcs)
	Motor(L×W×H)	Body(L×W×H)		
6SA46/3S	1000×150×150	700×150×150	M:45 B:16	460
6SA46/4S	1130×150×150	820×150×150	M:58 B:18.5	400
6SA46/5S	1190×150×150	930×150×150	M:64 B:21	360
6SA46/6S	1230×150×150	1040×150×150	M:67 B:23.5	320

Model	Dim. (mm)		G.W.(kg)	20"LoadInE Qty.(pcs)
	Motor(L×W×H)	Body(L×W×H)		
6SA60/3S	1130×150×150	700×150×150	M:58 B:16	420
6SA60/4S	1230×150×150	820×150×150	M:67 B:18.5	380

